

# Rank & File

The magazine of the Southern California Chess Federation

MAY-JUNE 2011

VOLUME XXXV, No. 3

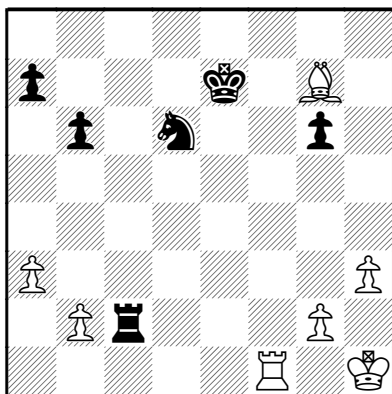
\$3.00



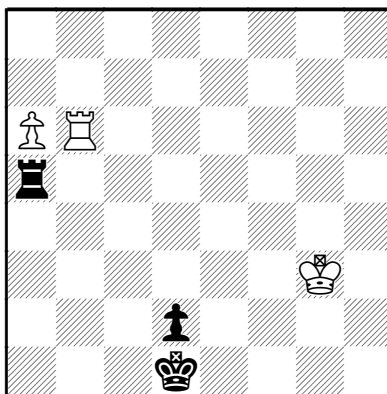
**4th Metro FIDE:  
Joel Banawa Takes First,  
Gets His Second IM Norm**

# INSIDE MOVES

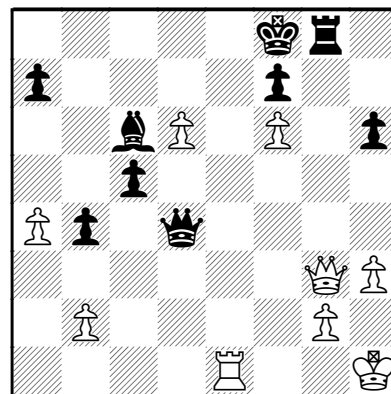
A *tactical warmup* might be a good way to start reading. A few of the problems are from games, and there are a few composed problems this time. See page 39 for solutions. - Ed.



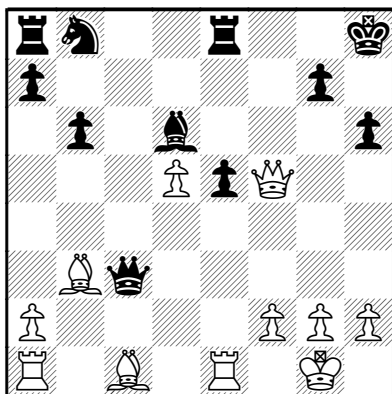
1. White to Play



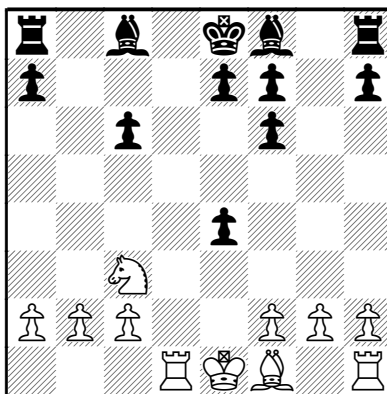
2. Black to Play



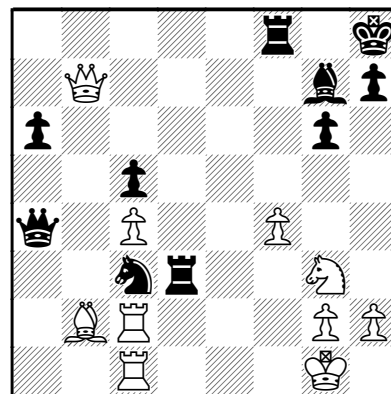
3. White to Play



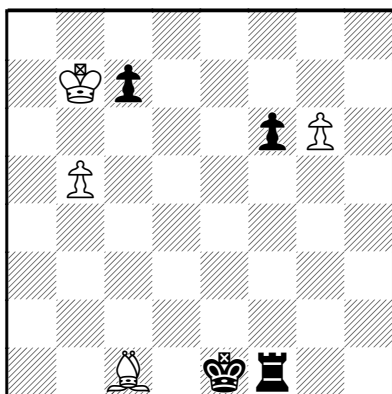
4. White to Play



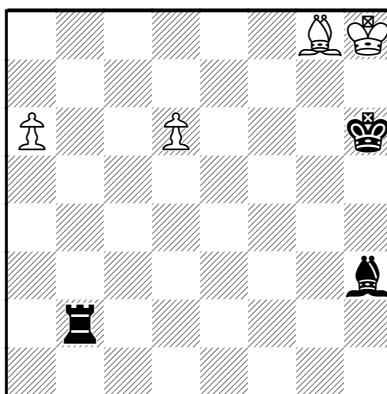
5. White to Play



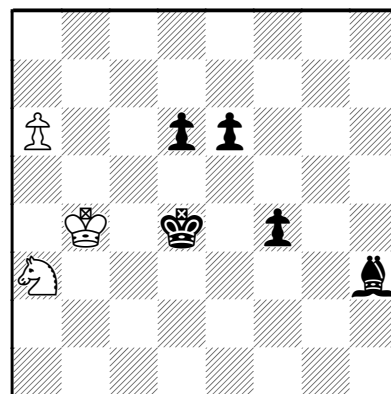
6. Black to Play



7. White to Play



8. White to Play



9. White to Play

*Southern California  
Chess Federation*

President Chuck Ensey  
Vice President Elliot Landaw  
Secretary Steve Morford  
Treasurer Randy Hough

**Executive Board**

Jim Bullock Mike Nagaran  
Anthony Ong Isabelle Minoofar  
Mick Bighamian Phil Chase  
Michael Belcher

*Rank & File*

Publisher David Argall

Editor Lawrence Stevens  
P. O. Box 5671  
Pasadena CA 91117  
RankAndFileEditor@gmail.com

Contributing Editor  
Jack Peters

**Contributors**

Joel Banawa  
Ankit Gupta  
Cyrus Lakdawala

**Subscriptions/Address Changes**

Randy Hough  
Membership Secretary  
P.O. Box 205  
Monterey Park CA 91754  
(626) 282-7412  
randallhough@yahoo.com

*Rank & File* — ISSN 8750-9164  
USPS 59, published bimonthly in January, March, May, July, September, and November by the Southern California Chess Federation, 1300 Ballista, La Puente CA 91744. POSTMASTER: Send changes of address to SCCF, PO Box 205, Monterey Park CA 91754. SCCF Memberships: \$18 adult, \$10 youth (19 years old). Magazine subscription only: \$10. Copyright © SCCF 2011. One-time only publication rights have been obtained from signed contributors. All other rights are hereby assigned to the authors. The opinions expressed are strictly those of the contributors and do not necessarily reflect the views of the SCCF, its officers or members.

# Rank & File

MAY-JUNE 2011

VOL XXXV, No. 3

## 4 POSITIONS

Editor's note, SCCF announcements, and your letters are welcome.

## 5 JOEL BANAWA WINS 4TH METRO FIDE INVITATIONAL

Recap by Ankit Gupta, with game selection and notes IM by Jack Peters.

## 15 CY & JACK

by IM Jack Peters and IM Cyrus Lakdawala.

Cy and Jack each annotated one of their own games, and then commented on each other's game and notes.

## 24 GAMES FROM RECENT EVENTS

Abrahamyan beats Sevillano, and more.

## 27 HERE AND THERE

Local club news, notices, and activities around Southern California.

## 33 WHERE TO PLAY CHESS

Directory of clubs throughout the Southland.

## 37 UPCOMING EVENTS IN SOUTHERN CALIFORNIA

See you at the Pacific Southwest!

COVER PHOTO: Chris Roberts

OTHER PHOTOS:

cr: Chris Roberts

th: Tim Hanks



# Positions



E-mail your letters to: [RankAndFileEditor@gmail.com](mailto:RankAndFileEditor@gmail.com)

## SCCF Annual Board Election

Six members will be elected to the 12-member SCCF Board of Directors, with ballots included with the July-August Rank & File and in-person voting at the Southern California Open on Labor Day weekend.

One of these seats is currently vacant; the others are held by Mick Bighamian, Phil Chase, Chuck Ensey, Randy Hough, and Elliot Landaw.

Anyone interested in running should contact Elections Chairman Mike Nagaran at:

**[mnagaran@fuhsd.net](mailto:mnagaran@fuhsd.net)**

### Editor's note:

Please be on the lookout for interesting material, especially in somebody else's game. Because if you are interested, we will be, too! Even if it's just a single amazing move, or a com-

bination, please send it in and we can share it with the readers.

A combination can make a good problem. When we ran out of problems this time, we found composed ones to present. I would like to acknowledge [www.yacpdb.org](http://www.yacpdb.org), "Yet Another Chess Problem Database" for helping to find them. You can search by the total number of pieces and other ways.

This month, there were a few games annotated by the editor, and I hope I made a virtue of being bewildered, by mentioning moves that I thought should be good, and then letting Fritz refute them out of hand!

Fritz also found one-time drawing opportunities in games which seemed to be long decided.

If you would like to present a game, and especially if you will do a lot bet-

ter than I, please send your e-mail address, and we can assign you one.

Finally, please note the coming GM events at Metropolitan Chess this summer, as listed in Here and There.

I would like to add a little supplementary information, if you go there and find yourself in need of a tasty burger or beverage:

Coffee Bean & Tea Leaf, 210 Olympic Blvd.

Starbucks, 900 Santee St.

Tiara Café, 127 9th St.

New Moon Restaurant, 109 9th St.

L'Angolo Café, 101 9th St.

El Pollo Loco, 226 9th St.

Subway, 908 Santee St.

Carl's Jr, 106 Olympic Blvd.

McDonald's, 933 Santee St.

Until next issue, good luck in your chess! - Ed.

# SOUTHERN CALIFORNIA STATE CHAMPIONSHIP

## REQUEST FOR DONATIONS

We are one of the few states to hold an invitational championship, which will take place August 13-14 and 27-28 at the Beverly Hills Chess Club.

Generating a prize fund worthy of our top players' efforts will require some donations.

Please help by sending your check to:  
SCCF, PO Box 205, Monterey Park, CA 91754

# Joel Banawa Wins 4th Metro FIDE

**With 7½ of 9, Joel Banawa won the 4th Metro FIDE Invitational in downtown Los Angeles and earned his second IM norm.** Second, one point behind and earning his first IM norm, was Pedram Atoufi of Iran. Finishing third at 5½ was 13-year-old Yian Liou.

We thank Metropolitan Chess for providing the following recap by Ankit Gupta and for Joel Banawa's annotated games. - Ed.

By Ankit Gupta

The 4th Metropolitan FIDE Invitational concluded last month on April 10th. It was organized by Ankit Gupta and directed by Randy Hough and Michael Belcher.

FM Joel Banawa and FM Pedram Atoufi both achieved IM norms with a minimum required score of 6½ out of 9. FM Joel Banawa ended with a terrific 7½ out of 9 to also claim clear first. NM Yian Liou, a newcomer to the Metropolitan Chess events, finished with a respectable 5½/9 for third place. This is FM Banawa's second norm, and FM Atoufi's first.

Coincidentally, Atoufi and Banawa were paired in round one, with a decisive result. From round two on, they both managed scores of 6½ out of 8!

The tournament was sponsored by California Market Center, Fashion Business, Inc, MonRoi, Chess.com, LawyerFy, and Betty Bottom Showroom.

Full standings from this tournament are fully updated on the website on the schedule page of the Metropolitan Chess website at [www.metrochessla.com/schedule.php](http://www.metrochessla.com/schedule.php)

The participants included: IM Zhanibek Amanov (KAZ), IM Timothy Taylor (USA), IM Andranik Matikozyan (ARM), FM Pedram Atoufi (IRI), FM Joel Banawa (USA), FM Michael Casella (USA), SM Roman Yankovsky (RUS), Vadim Kudryavtsev (RUS), NM Alessandro Steinfl (ITA), and NM Yian Liou (USA).

Round by Round Pairings, Colors, and Scores		1	2	3	4	5	6	7	8	9
1 Banawa, Joel 2340	USA W10	W2	B3	W4	B5	W6	B7	W8	B9	
		<b>1</b>	<b>2</b>	<b>3</b>	<b>3½</b>	<b>4½</b>	<b>5</b>	<b>5½</b>	<b>6½</b>	<b>7½</b>
2 Steinfl, Alessandro 2212	ITL W9	B1	W10	W3	B4	W5	B6	W7	B8	
		0	0	0	0	0	1	1	1	1
3 Yankovsky, Roman 2381	RUS W8	B9	W1	B2	W10	W4	B5	W6	B7	
		½	1½	1½	2½	2½	3½	3½	3½	4
4 Liou, Yian 2276	USA W7	B8	W9	B1	W2	B3	W10	W5	B6	
		½	1½	2	2½	3½	3½	4	4½	5½
5 Taylor, Timothy 2318	USA W6	B7	W8	B9	W1	B2	W3	B4	W10	
		<b>1</b>	1	2	2½	2½	2½	3½	4	4½
6 Matikozyan, Andranik 2476	ARM B5	B10	W7	B8	W9	B1	W2	B6	W4	
		0	½	1	1½	2½	3	4	5	5
7 Amanov, Zhanibek 2391	KAZ B4	W5	B6	B10	W8	B9	W1	B2	W3	
		½	1½	2	2	2	3	3½	4½	5
8 Casella, Michael 2249	USA B3	W4	B5	W6	B7	B6	W9	B1	W2	
		½	½	½	1	2	2	3	3	4
9 Kudryavtsev, Vadim 2115	RUS B2	W3	B4	W5	B6	W7	B8	B10	W1	
		<b>1</b>	1	1½	2	2	2	2	2	2
10 Atoufi, Pedram 2239	IRI B1	W6	B2	W7	B3	W8	B4	W9	B5	
		0	½	1½	2½	3½	4½	5	6	6½



*Pedram Atoufi: 2nd place, IM norm.*

Alongside this event, we ran the 2nd Metropolitan Chess FIDE Qualifier concurrently. This new qualifier series is meant to give opportunities to players under 2200 FIDE to qualify into the International Master norm round robins and to give opportunities to players with no FIDE ratings the chance to achieve FIDE performance norms.

NM Michael William Brown (USA) won this qualifier and earned a place in the 5th Metropolitan Chess FIDE Invitational.

However, he instead opted for complimentary entry into the August super-swiss, the 1st Metropolitan International.

For your enjoyment, Joel Banawa has provided annotations to two of his efforts below. We hope you find them interesting.

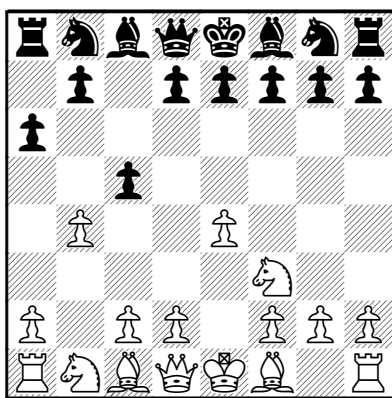
**Taylor, Tim (2318) -  
Banawa, Joel (2340)  
[B28] Sicilian Defense  
4th Metropolitan FIDE (5)  
Los Angeles, 08.04.2011**

Notes by Joel Banawa.

**1.e4 c5 2.Nf3 a6**

Before the game, I wasn't sure what to expect from IM Taylor. It's always a fight to play against him with Black pieces since he has a penchant for aggressive play and always finds a way to attack your King.

**3.b4!?**



It makes sense to sacrifice the b4-pawn. This transposes to the Wing Gambit which can sometimes be a good surprise weapon.

**3...cxb4 4.a3**

It's not often that the Wing Gambit is seen at the master level, and I'm not familiar with book theory beyond this point in this line.

**4...e6**

This was the only move that seemed to make sense to me. White's planning on putting the Bishops on both b2 and c4.

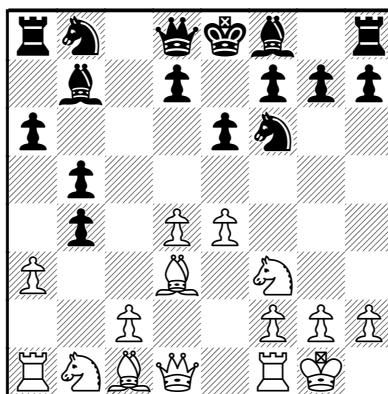
**5.d4**

White's playing this line too casually, I believe that 5.axb4 was a better choice. 5...Bxb4 6.Bb2 Nf6 7.e5.

**5...b5!**

I believe this is a very strong move. It prevents future c4. Also, this gives a comfortable square for my Bishop on b7 where it pressures the e4 pawn.

**6.Bd3 Bb7 7.0-0 Nf6**



**8.d5**

White has to do this to justify his pawn sacrifice. After 8.e5 Nd5, the idea of 5...b5 shows. Or, if 8.Re1 d5



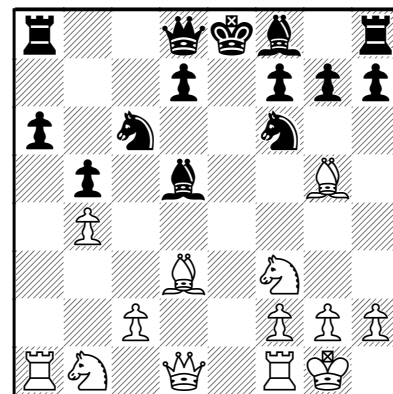
Timothy Taylor

9.e5 Ne4, Black has his fair share of space with an extra pawn!

**8...exd5 9.exd5 Bxd5! 10.Bg5**

White is desperate to make something happen.

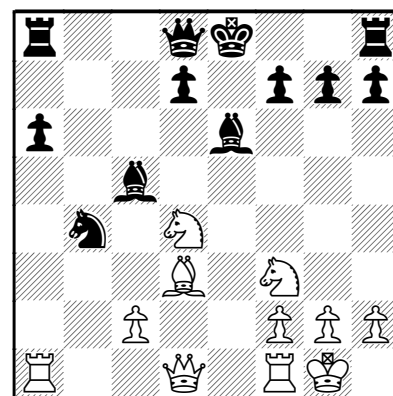
**10...Nc6 11.axb4**



**11...Nxb4! 12.Nc3 Be6**

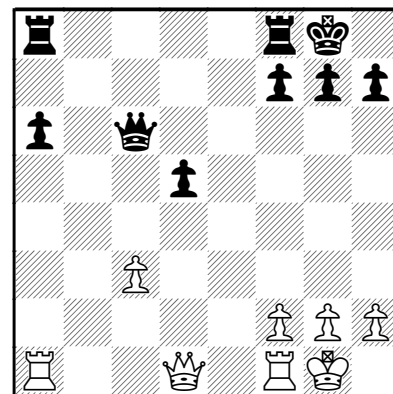
Black has to give back one of the pawns to finish his development.

**13.Bxf6 Qxf6 14.Nxb5 Qd8  
15.Nbd4 Bc5**



And Black is just a pawn up... but it's still difficult.

**16.Be4 d5 17.Bf5 Bxf5 18.Nxf5  
0-0 19.N3d4 Qf6 20.c3 Bxd4  
21.Nxd4 Nc6 22.Nxc6 Qxc6**



This isn't supposed to be easy to win, but my opponent was under time pressure.

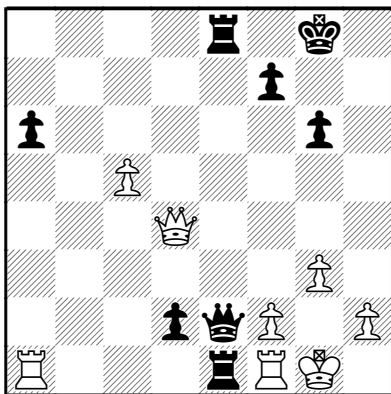
**23.Ra5 Rfd8 24.Qd3 Rac8 25.Rc1**

*Better was 25.Rxa6 Qxc3 26.Qxc3 Rxc3 27.Rfa1+ -Ed.*

**25...Rd6 26.g3 h5 27.Qf5 g6 28.Qg5**

*Lasting longer was 28.Qd3 d4 29.c4 Kg7+ -Ed.*

**28...d4!-+ 29.c4 d3 30.Qd2 Re8 31.c5 Rde6 32.Raa1 Qf3 33.Rf1 h4 34.Qh6 d2 35.Qxh4 Re1 36.Qd4 Qe2**



0-1

**Amanov, Zhanibek (2421) - Banawa, Joel (2340)**  
**[B40] Sicilian Defense**  
**4th Metropolitan FIDE (7)**  
**Los Angeles, 09.04.2011**

Notes by Joel Banawa.

**1.Nf3!?**

The last time I played him, he employed 1.e4.

**1...c5 2.e4**

But it transposes back anyway.

**2...a6!?**

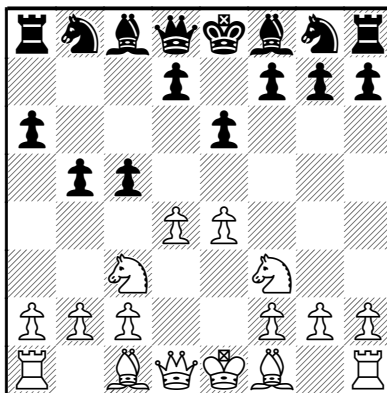
Many people disregard this opening.

In my opinion, it's probably not as good as the Najdorf but it's a playable opening.

**3.Nc3**

White just wants to transpose back to the main line of the Kan. If he played 3.d4 cxd4 4.Nxd4 Nf6 5.Nc3 e5, it's a well known O'Kelly trap, where Black just equalizes easily, a Sveshnikov where White doesn't have Ndb5.

**3...e6 4.d4 b5!?**



And now, my opening knowledge ends here.

I saw this once in a so called "Dangerous Weapons" book, which, in my opinion, is an undervalued series of books by Everyman Chess, and I found the idea interesting.

**5.d5**

Looks natural.

**5...Bb7 6.dxe6 fxe6**

6...dxe6 is possible but it leads to an endgame where White's the only one who can push for a win.

**7.e5**

Of course, the d6 square.

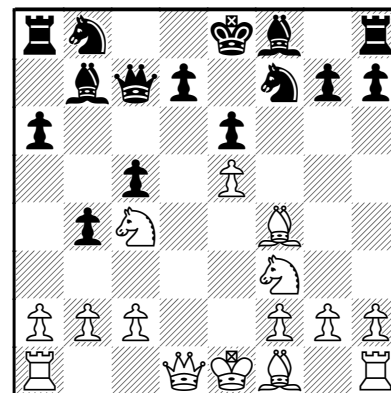
**7...b4 8.Nb1 Qc7 9.Nbd2**

9.Bf4 is also possible.

**9...Nh6 10.Nc4 Nf7 11.Bf4**



Zhanibek Amanov



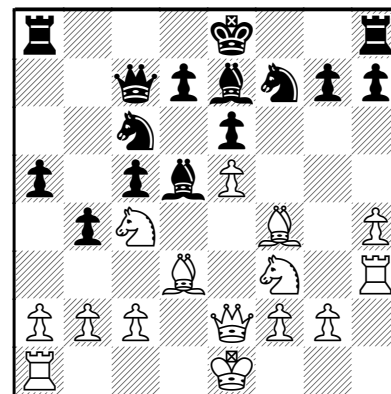
**11...Bd5!**

I think this is pretty much forced, or else Nd6 is very strong.

**12.Bd3 Be7 13.h4**

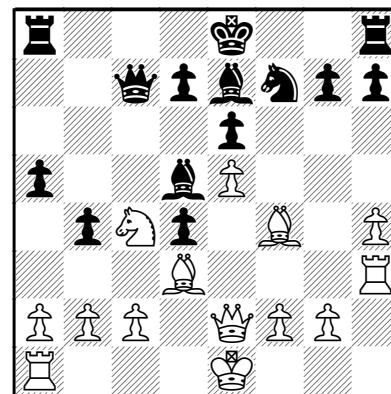
Preventing Black from castling.

**13...Nc6 14.Qe2 a5 15.Rh3!?**



White goes for the Kingside while Black is going for the Queenside. To be honest, I don't quite fully understand this position.

**15...Nd4 16.Nxd4 cxd4**

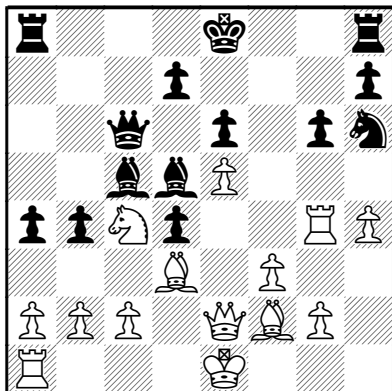


**17.Rg3**

Maybe a slight inaccuracy. Stronger was 17.h5!

**17...g6 18.Rg4 Qc6 19.f3 a4 20.Bg3**

White's aiming for the d4 pawn.  
**20...Bc5 21.Bf2 Nh6**



**22.Rf4**

It seems like White is just winning the d4 pawn now. 22.Rxd4! was probably better: 22...Bxd4? 23.Nd6+ Qxd6 was what I was considering (23...Ke7? 24.Bxd4+-) 24.exd6 Bxb2 25.Rd1 Bc3+ 26.Kf1 Bxa2, but it was not good enough: 27.Bb5! a3 28.Bxd7+! and White is winning.

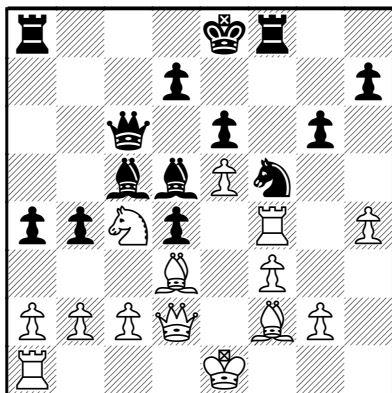
**22...Rf8!**

But Black holds everything!

**23.Qd2**

23.Rxf8+ is interesting. 23...Kxf8 24.Qd2?! Nf7=.

**23...Nf5**



1/2-1/2

Now I offered a draw, thinking that maybe White has a perpetual check, and my opponent took it.

My calculation, before the draw was accepted, was: 24.g4 Ne3 25.Rxf8+ Kxf8 26.Nxe3 dxe3 27.Bxe3 a3 28.Bxc5+ Qxc5 29.Qh6+ Kg8 30.Bxg6.

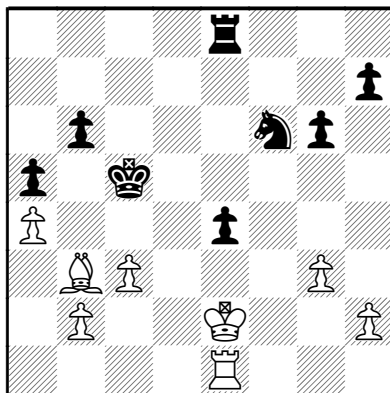
However here, when I offered the draw on move 23, I did not see that Black has 30...Qg1+ followed by Qf2+ and Qxf3+ with a win. ♖

Jack Peters has selected and annotated three games from the tournament. The first is an endgame campaign by Michael Casella, the second is an adventure with the ancient Evans Gambit by Andranik Matikozyan, and the third is a fine middlegame attack by Casella.

We hope you enjoy the variety of interesting lessons. - Ed.

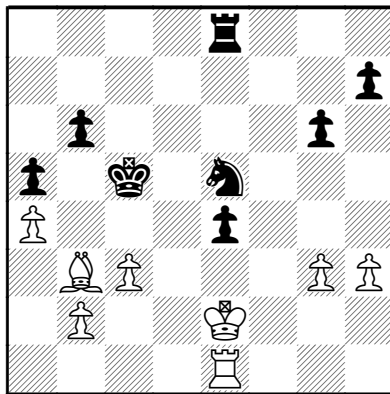
**Amanov,Zhanibek (2391) - Casella,Michael (2249)**  
**4th Metropolitan FIDE (5)**  
**Los Angeles, 08.04.2011**

Notes by Jack Peters



The position is balanced and a draw seems imminent. White's King is a fine blockader, his Bishop appears useful and his Rook may go to d1. Nevertheless, Casella manages to pose difficult problems for his opponent.

**42...Ng4 43.h3 Ne5**



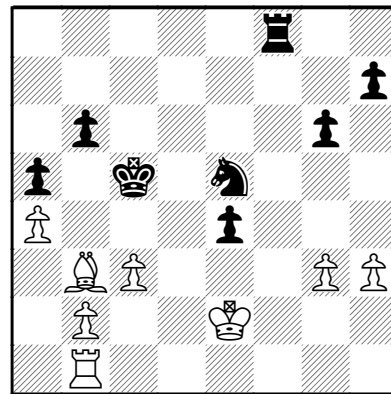
The Knight eyes d3 and c4.

**44.Rb1**

Not bad. Now White can parry 44...Nd3 with 45. Ke3, and 44...Nc4 with 45. Ba2, threatening 46. b4+.

However, 44.Rd1 is the simplest way to maintain equality. Then 44...Nd3 45.Ke3 (not 45. Rd2?? Nc1+) anticipates 45...Rf8 46. Rd2= and 45...Nxb2 46.Rd5+ Kc6 47.Rd4 Nd3 48.Bc4 Re7 49.Bxd3 exd3+ 50.Kxd3=.

**44...Rf8!?**



Threatening 45...Rf3. White has four plausible replies, but only one draws convincingly.

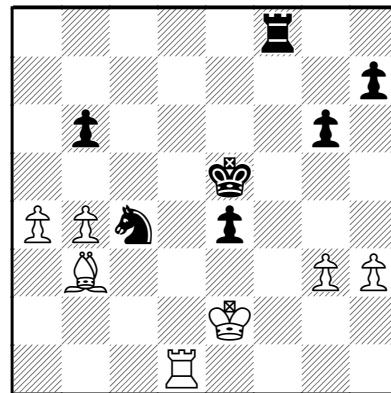
**45.Ke3?**

Not this one, although White temporarily gains a pawn.

No better is 45.Rf1? as Black picks off the b-pawn by ...Rxf1 46.Kxf1 Nd3.

Correct is 45.Rd1! Nd3 46.Ke3 when 46...Re8 47. Rd2 and 46...b5 47.axb5 Kxb5 48.Rd2 Nc5 49.Bd1 are quite safe.

Finally, 45.Bc2?! Nc4 46.b4+ axb4 47.cxb4+ Kd4 48.Rd1+ Ke5 49.Bb3



looks tempting until Black unexpectedly replies 49...Ne3! ensuring a Rook invasion at f3.

**45...Nc4+ 46.Bxc4**

Forced. Neither 46.Kxe4?? Nd2+ nor 46.Ke2 Rf3+ helps.

**46...Kxc4 47.Kxe4**

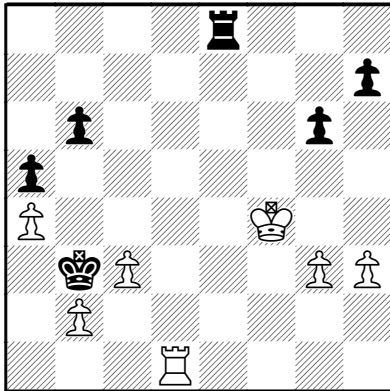
Black obtains good winning chances.

es from 47.b4 Rf3+ 48.Kxe4 Rxg3 49.bxa5 bxa5 50.Rb5 Rxh3 51.Rxa5 Kxc3 thanks to his connected passers.

**47...Re8+ 48.Kf4 Kb3**

Next ...Kb3-c2 will recover the pawn. White correctly strives for counterplay, but it's doubtful if he can eke out a draw against precise Black play.

**49.Rd1**



**49...Kxb2**

Best. Black cannot stifle counterplay by 49...Re6?! 50.Rd2 Kxa4 51.g4 h6 (avoiding 51...Kb3 52.Kg5=) because White fights back with 52.g5! h5 53.Rd8! Kb3 54.Rf8 Kxb2 55.Rf6.

**50.Rd6**

If 50.Rd7 Kxc3 51.Rxh7, Black can clinch the win, with two long calculations, by 51...Kb4.

First, 52. Kg5 Kxa4 53. Kxg6 loses to 53...Rg8+! 54. Rg7 Rxg7+ 55. Kxg7 Kb4 56. h4 a4, as Black promotes with check.

And second, 52.Rb7 runs into 52...Re6 53.h4 Kxa4 54.g4 b5 55.h5 gxh5 56.gxh5 b4 57.Kg5 b3 58.h6 Re1 59.h7 Rh1 60.Kg6 Ka3 61.Kg7 b2 62.h8Q Rxh8 63.Kxh8 a4-+.

**50...Rb8 51.Rd7 b5 52.axb5 Rxb5**

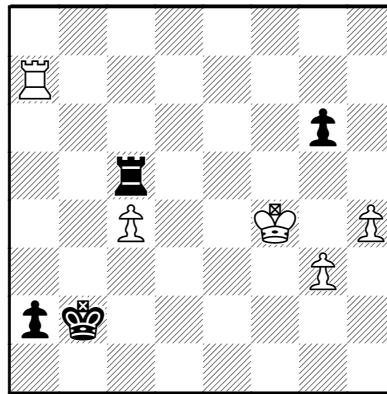
From b5, the Rook shields Black's King while keeping White's King from reaching g5.

**53.Rxh7**

If 53.Ra7 then Kxc3-+.

Or 53.c4 Rc5! (not so clear is 53...Rb4? 54.Kg5) 54.Rxh7 a4 55.Rb7+ Kc2 56.Ra7 Kb3 57.Rb7+ (57.h4 a3) 57...Kxc4 58.Ra7 Kb4-+ when Black stops the checks by interposing his Rook.

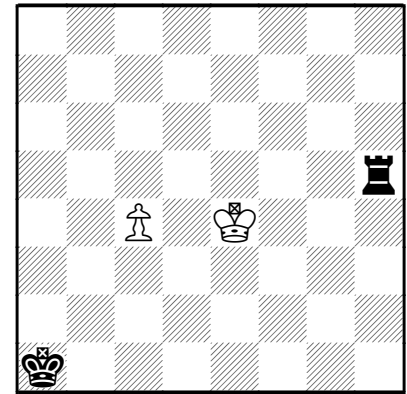
**53...a4 54.Ra7 a3 55.c4 Rc5! 56.h4 a2**



**57.g4**

After 57.Rb7+ Ka3 58.Ra7+ Kb3, Black plans ...Rc5xc4-a4.

**57...a1Q 58.Rxa1 Kxa1 59.h5 gxh5 60.gxh5 Rxh5 61.Ke4 0-1**



White resigned because Black would intercept the c-pawn by 61...Kb2 62. Kd4 Kb3 63. c5 Kb4 64. c6 Rc5.

A superb endgame by Casella!

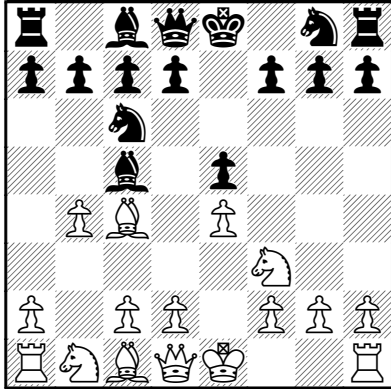


Michael Casella: a superb endgame!

**Matikozyan, Andranik (2476) -  
Steinfl, Alessandro (2212)  
[C52] Evans Gambit  
4th Metropolitan FIDE (7)  
Los Angeles, 09.04.2011**

Notes by Jack Peters

**1.e4 e5 2.Nf3 Nc6 3.Bc4 Bc5  
4.b4!?**



The Evans Gambit is still considered dangerous, nearly 200 years after its invention.

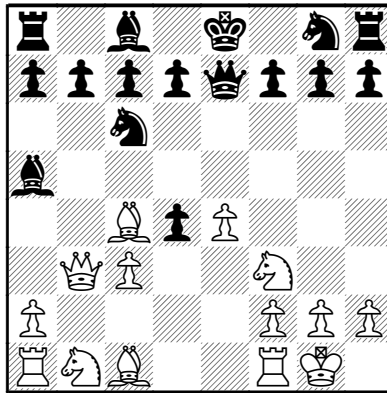
**4...Bxb4 5.c3 Ba5 6.d4 exd4**

The gambit went out of popularity

more than a century ago when Black discovered Lasker's Defense, 6...d6 7.0-0 Bb6 8.dxe5 dxe5 9.Qxd8+ Nxd8 10.Nxe5 Be6=; White has sought an advantage in the line 6...d6 7.Qb3 Qd7 but without success.  
**7.Qb3**

Against 7.0-0 Black can try the ancient 7...d6 8 cxd4 Bb6, which gives White fair compensation, or the relatively modern 7...Nge7 8.cxd4 d5 9.exd5 Nxd5 which seems to equalize.

**7...Qe7 8.0-0**



*Andranik Matikozyan: The Evans Gambit is still dangerous.*

**8...d6?!**

Allowing White to recover one pawn and obtain more than enough compensation for the other.

Too greedy is 8...dxc3? 9. Nxc3 Nf6 10. Nd5, as in the famous Fischer-Fine miniature.

But 8...Bb6 9.cxd4 Nxd4 10.Nxd4 Bxd4 11.Nc3 Nf6 is the critical test of 7. Qb3. Nigel Short ventured 12.Nb5!? d5! 13.exd5 Bxa1 14.Ba3 Qe5 15.f4 Bd4+ 16.Kh1 Qe3 17.Nxd4 Qxb3 18.Re1+ Kd8 19.Be7+ Kd7 20.Nxb3 c6 21.d6 b6 22.Bxf7 when White has reasonable compensation for the exchange.

**9.cxd4 Bd7?**

Black instantly goes wrong. Instead, 9...Bb6 holds White to a small advantage.

**10.d5!**

White is not ready for 10.Qxb7?? Rb8 11.Qa6 Rb6+-, but 10.d5 prepares to capture at b7.

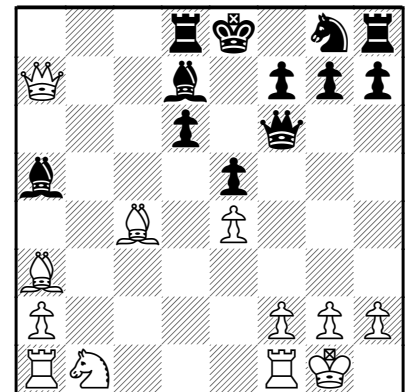
**10...Ne5**

Now White can force a winning position.

However, 10...Nd8 isn't much of an improvement. After 11.Nc3 White will smash open the center with e4-e5. For example, 11...f6 12.Re1 Nh6 permits 13.e5! fxe5 (or 13...dxe5 14.Ba3 Qf7 15.Nxe5+-) 14.Bg5 Qf8 15.Nxe5+-.

**11.Nxe5 dxe5 12.Qxb7 Rd8  
13.Ba3 Qf6 14.d6!+-**

More deadly than 14.Qxa7 Bb6.  
**14...cxd6 15.Qxa7**



**15...d5**

Hoping to save his Bishop by 16. Bxd5 Bb6.

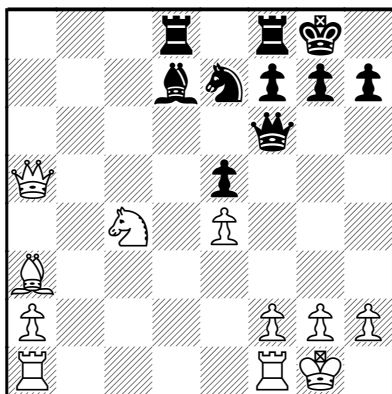
Black cannot rescue it by 15...Rc8 16.Ba6 Rc7 17.Bb7, as White threat-

ens 18. Qxa5 Rxb7 19. Qa8+.

**16.Qxa5 dxc4 17.Nd2**

The gambiteer's dream - his pieces swarm while the opponent's King is caught in the center.

**17...Ne7 18.Nxc4 0-0**



As good as any, but Black must yield a second pawn.

**19.Qxe5 Qxe5 20.Nxe5 Rfe8 21.Rfd1 1-0**

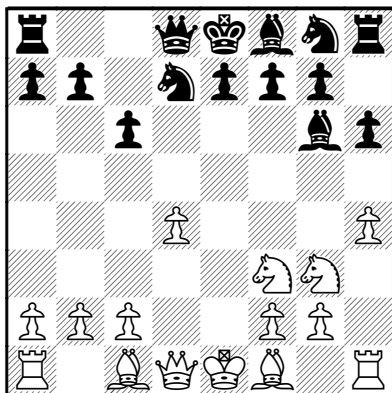
**Casella,Michael (2249) - Kudryavtsev,Vadim (2115)**  
**[B19] Caro-Kann Defense**  
**4th Metropolitan FIDE (7)**  
**Los Angeles, 09.04.2011**

Notes by Jack Peters

**1.e4 c6 2.d4 d5 3.Nc3 dxe4 4.Nxe4 Bf5**

The dependable main line of the Caro-Kann.

**5.Ng3 Bg6 6.h4 h6 7.Nf3 Nd7**



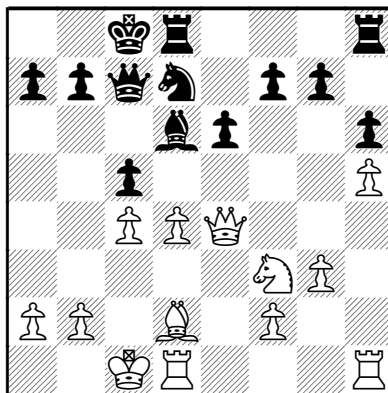
**8.h5 Bh7 9.Bd3 Bxd3 10.Qxd3 Qc7 11.Bd2 Ngf6 12.0-0-0 e6 13.Ne4 0-0-0**

Some players prefer Kingside castling, which puts both Kings in more danger.

**14.g3 Nxe4**

After 14...Be7 15.Kb1± White's threat of Bd2-f4 becomes serious.

**15.Qxe4 Bd6 16.c4 c5**



**17.Bc3**

All well known. White has a small advantage, but Black should be optimistic about holding a draw.

Sharper, but less effective, is 17.d5 Nf6 18.Qc2 exd5 19.cxd5 Rhe8=.

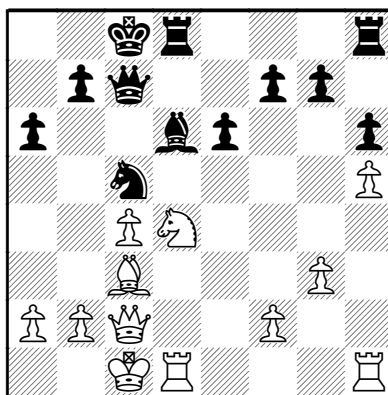
**17...cxd4**

Also 17...Nf6 18.Qe2 cxd4 19.Nxd4 a6 20.Kb1 maintains White's edge.

**18.Nxd4 Nc5**

Not 18...Qxc4?? 19.Nf5! Nb6 because 20.Rd4 Qc7 21.Nxd6+ Rxd6 22.Rxd6 Qxd6 23.Bxg7 Rd8 24.Bxh6 destroys Black's King-side.

**19.Qc2 a6**



**20.Rhe1**

Casella displays an admirable mix of aggression and patience. After the tempting 20.b4 Nd7 21.c5 Be7, Black will centralize his Knight by ...Nd7-f6-d5.

**20...Rhe8**

Timman's choice, 20...Be7 21.Kb1 Bf6, comes closer to equalizing.



*Alessandro Steinfl*

**21.Kb1 Nd7 22.Nb3! f6**

Probably best.

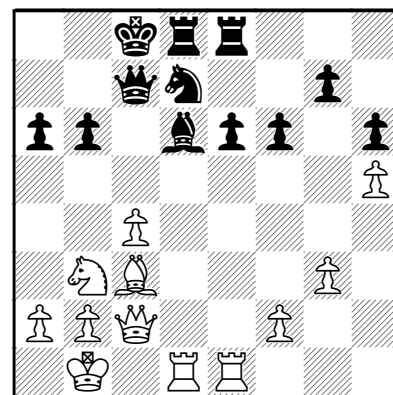
Black weakens e6 rather than submitting to the uncomfortable 22...Nf6 23.c5 Be7.

The passive 22...Bf8 does not inspire confidence either.

**23.Ba5**

Provoking another weakness.

**23...b6 24.Bc3**



**24...Ne5**

This was a good moment for 24...Kb8. If 25.f4 Nc5 26.Nd4, Black can

fight back with 26...e5 27.Nf5 e4±.

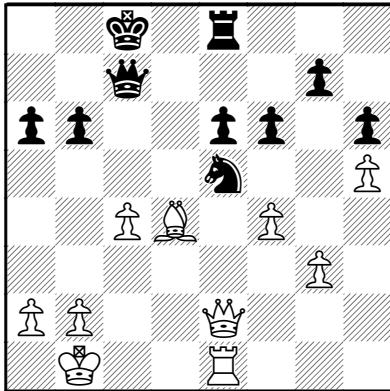
**25.Nd4**

Threatening 26. f4 Nxc4 27. Nxe6.

**25...Bc5**

Not 25...Qxc4?? because 26.b3 gains material after either 26...Qd5 27. Nf5! or 26...Qc7 27.f4+-.

**26.Qe2 Rd6 27.f4 Bxd4 28.Rxd4 Rxd4 29.Bxd4**



**29...Nd7**

The superior 29...Nc6 30.Bf2 e5 produces a position which Black should hold with perfect defense, but, in practice, White will likely win.

**30.c5! b5?!**

White refutes 30...bxc5? 31.Qxa6+ Qb7 by 32.Qc4 Qb4 (or 32...Qc6 33.b4) 33.Qxb4 cxb4 34.Kc2, soon winning the pawn at b4.

Toughest is 30...Kb7 31.cxb6 Nxb6 keeping a little hope.

**31.Qg4 Nf8**

After this natural move, Black cannot fend off White in the middle-game.

But heading for the endgame by 31...Nb8 32.Rxe6 Rxe6 33.Qxe6+ Qd7 34.Qxd7+ Kxd7 35.Kc2 Ke6 36.Kd3 Kd5 37.b4 Nc6 38.Bc3+- should not save Black either. White will arrange a breakthrough with g3-g4-g5.

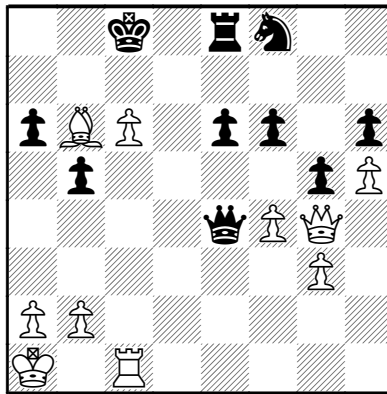
**32.c6!+-**

Opening c5 for the blocked Bishop.

**32...Qe7 33.Bb6 Qb4 34.Rc1**

Another way to win is 34.Qd1 (threatening 35. Rxe6) 34...Kb8 35.Re2 (threatening 36. Qd8+ Rxd8 37. c7+) 35...Qe7 36.c7+ Kc8 37.Qh1+-.

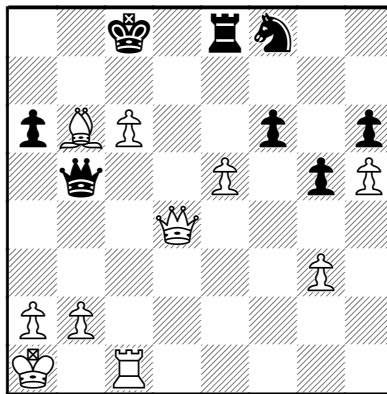
**34...Qe4+ 35.Ka1 g5**



**36.Qd1! Qd5**

Black's King is too exposed. He manages to stop 37. Qd6, but White's reply threatens to bring the Queen to a5.

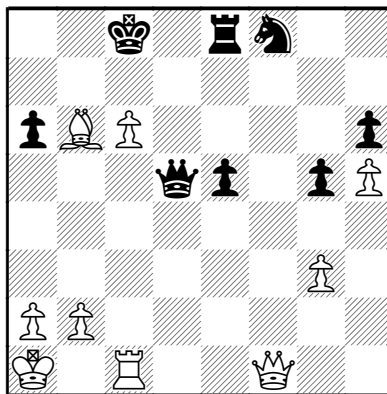
**37.Qe1 b4 38.Qxb4 Qb5 39.Qd4 e5 40.fxe5**



**40...fxe5**

If 40...Qxe5 White finishes elegantly by 41.Qc4 Qe2 42.Qb3 (threatening 43. Bc5) 42...Qe6 (or 42...Qb5 43.Qf7) 43.Qd3 Qe2 44.Qf5+ Qe6 (or 44...Re6 45.Qd5 Re8 46.c7) 45.Re1! Qxf5 46.Rxe8 mate.

**41.Qf2 Qd5 42.Qf1! 1-0**

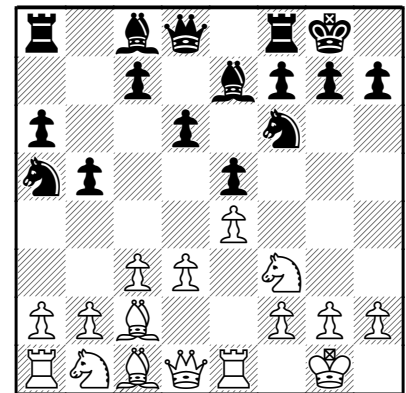


White's Queen gets to a6 or f7. ♚

The following games by the second and third placers Pedram Atoufi and 13-year-old Yian Liou were selected by the editor, who provided a few observations.

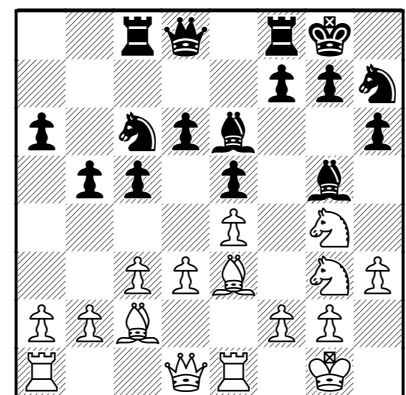
**Yankovsky,Roman (2381) - Atoufi,Pedram (2239) [C90] Ruy Lopez 4th Metropolitan Invitational (5) Los Angeles, 08.04.2011**

**1.e4 e5 2.Bc4 Nc6 3.Nf3 Nf6 4.d3 Be7 5.0-0 0-0 6.Re1 d6 7.c3 Na5 8.Bb5 a6 9.Ba4 b5 10.Bc2**



This game started off as a Bishop's Opening, and became a Two Knight's Defense and then a Hungarian Defense. Finally, it's a Ruy Lopez, Steinitz Variation, matching the position after the more usual move order of 1. e4 e5 2. Nf3 Nc6 3. Bb5 a6 4. Ba4 Nf6 5. d3 b5 6. Bb3 Be7 7. O-O d6 8. c3 O-O 9. Re1 Na5 10. Bc2.

**10...c5 11.Nbd2 Nc6 12.Nf1 h6 13.h3 Be6 14.Ng3 Rc8 15.Nh2 Nh7 16.Ng4 Bg5 17.Be3**

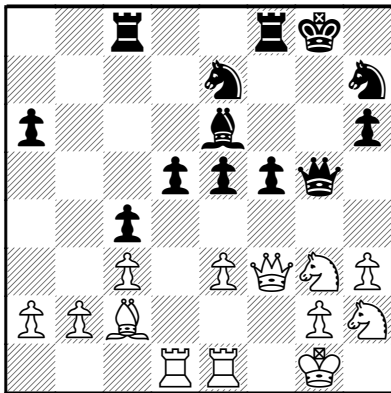


**17...Bxe3 18.fxe3**

White can clamp down on the center squares with 18.Nxe3, taking

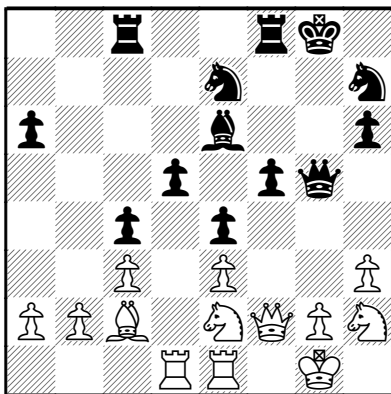
what is given.

18...Qg5 19.Qf3 g6 20.Nh2 f5  
21.exf5 gxf5 22.Bb3 c4 23.dxc4  
bxc4 24.Bc2 Ne7 25.Rad1 d5



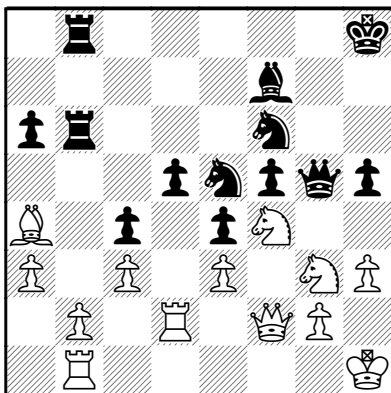
Black has gained an impressive space advantage and has a fearsome pawn front to boot.

26.Qf2 e4 27.Ne2



But now White uses his Knight as a great blockader.

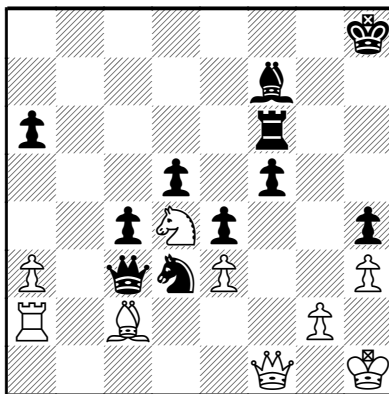
27...Kh8 28.Nf4 Bf7 29.Nf1 Rg8  
30.Kh2 Nf6 31.Rd2 Nc6 32.Kh1  
Ne5 33.Rd4 Rc5 34.Rb1 Ra5  
35.a3 Rb8 36.Rdd1 Rab5 37.Ba4  
R5b6 38.Ng3 h5 39.Rd2



39...h4

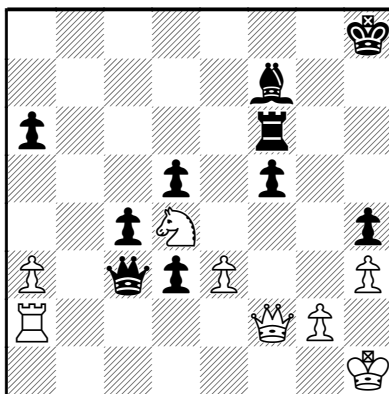
White can capitalize on his previous Knight maneuvers with 39...Nd3 40.Nxd3 exd3-+.

40.Nge2 Nd3 41.Qg1 Nxb2 42.Bc2  
Nd3 43.Rxb6 Rxb6 44.Ba4 Nh5  
45.Nxh5 Bxh5 46.Nf4 Bf7 47.Ne2  
Qe7 48.Qf1 Rf6 49.Ra2 Qc5  
50.Nd4 Qa5 51.Bc2 Qxc3



Black's hard maneuvering work is paying off!

52.Bxd3 exd3 53.Qf2



53...f4?

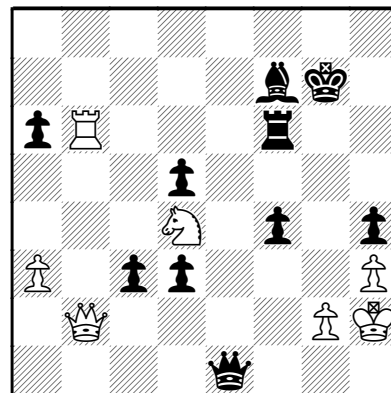
Black can prevent the following techno-draw with 53...Kg7!

54.Rb2?

But now Black wraps it up without further difficulties.

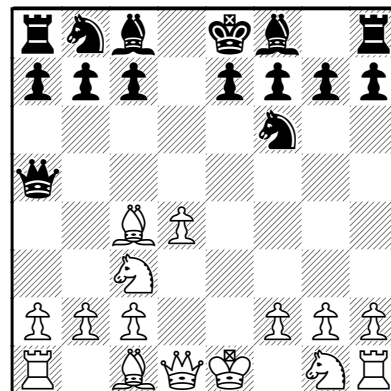
The computer's drawing line is 54.Qxh4+! Kg7 55.Qg5+ Bg6 56.Qe5 Qe1+ 57.Kh2 Qg3+ 58.Kh1 Be4 (58...Qh4 59.Ne6+ Kg8 60.Nxf4 Bf7 61.Rb2 d2 62.Rxd2 Qe1+ 63.Kh2 Qxd2 64.Qxf6=) 59.Ne6+! Kf7 60.Nxf4 d2 61.Rxd2 Qe1+ 62.Kh2 Qxd2 63.Qc7+ and White continues to check.

54...Qc1+ 55.Kh2 Kg7! 56.Rb8 Qxe3 57.Qb2 Qe1 58.Rb6 c3



59.Qb4 Qg3+ 60.Kh1 Qe1+ 61.Kh2  
d2 62.Nf5+ Rxf5 63.Qxc3+ Re5  
0-1

Liou,Yian (2276) -  
Steinfl,Alessandro (2212)  
[B01]Center Counter  
4th Metropolitan Invitational (5)  
Los Angeles, 08.04.2011  
1.e4 d5 2.exd5 Qxd5 3.Nc3 Qa5  
4.d4 Nf6 5.Bc4



This move is not nearly as popular as 5.Nf3, but the game transposes into the main line.

5...c6

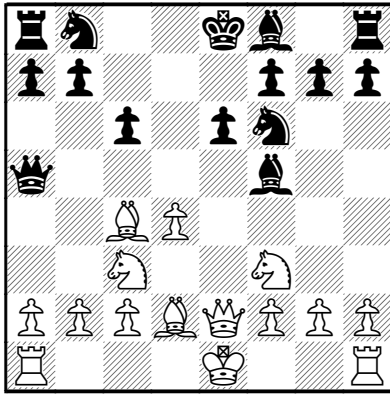
To respond to White's unusual 5th move, Black can try 5...Nc6, but must be ready for 6.Nge2 Bg4 7.f3 Bh5.

Or, 6.d5 Nb4 and now:

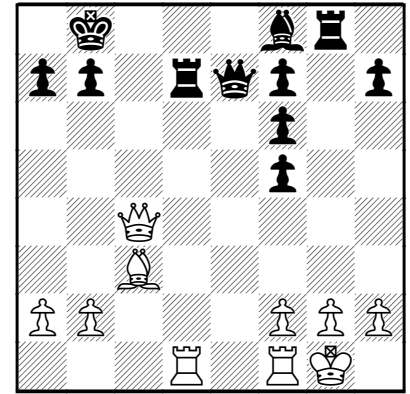
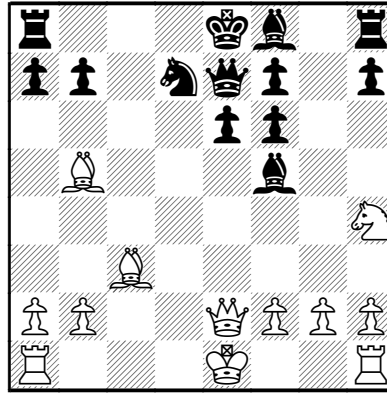
a) 7.Nf3 Bg4 8.Bd2 (8.a3 Bxf3 9.gxf3) 8...Bxf3 9.gxf3, or  
b) 7.a3 c6 8.Bd2 (8.dxc6 Nxc6) 8...Qc5 9.axb4 Qxc4 10.dxc6 Qxc6 11.Nf3.

Black may have a better position playing this way, rather than returning to the main line. However, it's easier if you can get by with knowing fewer lines.

6.Nf3 Bf5 7.Bd2 e6 8.Qe2



12.Bb5+ Nd7 13.Bc3 Bf5 14.Nh4  
Qe7



**8...Bxc2??**

The main line runs 8...Bb4 9.0-0 Nbd7 10.a3 Bxc3 11.Bxc3 Qc7 12.Ne5 Nxe5 13.dxe5 Nd5 14.Bd2 0-0-0 15.g4 Bg6 16.f4 h5 17.h3 Qb6.

**9.d5!**

Destruction is threatened on e6, so the Black Queen is frozen.

**9...cxd5 10.Nxd5 Qd8 11.Nxf6+ gxf6**

No better is 11...Qxf6 12.Bb5+ Nc6 13.Bxc6+ bxc6 14.Qc4, and the double attack on c2 and c6 wins.

**15.Rd1?!**

White creates a decisive bind by 15.Nxf5! exf5 16.Bxf6! Qxe2+ 17.Kxe2, and wins a piece in short order after 17...Rg8 18.Kf3 Rg6 19.Rhe1+ Be7 20.Bxd7+ Kxd7 21.Rxe7+.

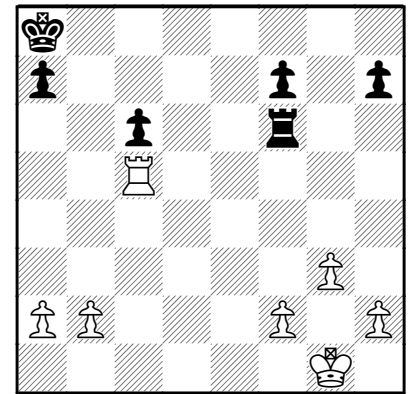
**15...0-0-0 16.0-0 Rg8 17.Nxf5 exf5 18.Qc4+ Kb8??**

More stubborn is 18...Nc5. **19.Bxd7 Rxd7**

**20.Bxf6?!**

Quicker is 20.Qf4+ Kc8 (20...Ka8 21.Qxf5 and then 22.Bxf6+-) 21.Rc1! Rc7 (21...Kd8 22.Qb8 is mate) 22.Bxf6 Bh6 (22...Rxc1 23.Rxc1+) 23.Qxh6.

**20...Qe8 21.Qf4+ Ka8 22.Qxf5 Rxd1 23.Rxd1 Bd6 24.g3 Qc6 25.Qd5 Bc5 26.Qxc6 bxc6 27.Rc1 Rg6 28.Rxc5 Rxf6**



So Black survives to the endgame, but White still enjoys the extra pawn plus a great positional advantage.

**29.Kg2 Kb7 30.g4 Kb6 31.Rh5 h6 32.Kg3 c5 33.Rd5 Kc6 34.Rd2**

After this plan upgrade, White makes it look like it's in the bag.

**34...a5 35.h4 a4 36.g5 hxg5 37.hxg5 Re6 38.f4**

The Black King is cut off from the Kingside, so White goes with the pawn advance.

**38...c4 39.a3 Kc5 40.f5 Rb6 41.Kf4**

White plays the defense of the Queenside with exemplary economy.

**41...c3 42.bxc3 Kc4 43.Rd4+ Kb3 44.Rb4+ 1-0**

After 44...Rxb4+ 45.cxb4 Kxa3 46.b5, White Queens with check after Black unblocks his a-pawn. ♔



13 year old Yian Liou: finished 3rd.

# Cy & Jack

By IM Jack Peters and IM Cyrus Lakdawala

**Cyrus Lakdawala and Jack Peters** have each annotated one of their own games and then provided commentary on the other's game and notes. This time, they chose games played with quick time controls, with Morshedi - Lakdawala at game in 40 minutes, and Friedel - Peters played at game in 90 minutes plus 5 second time delay throughout. In both games, there was not quite enough time for that winning position to win, but there's always time enough to miss the win, or even the draw. We hope you enjoy the games, the lessons, the commentary, and sometimes, the disagreements! - Ed.

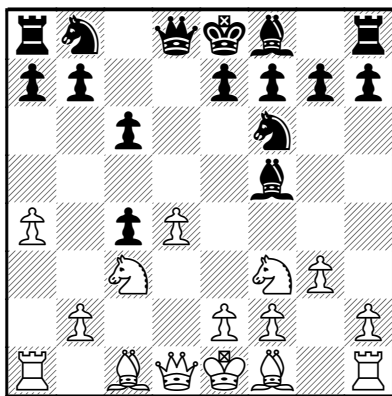
**Morshedi,A (2309) -**

**Lakdawala,C (2574)**

**[D17] Slav Defense**

**Gambito #507, G/40, 05.03.2011**

**1.d4 d5 2.c4 c6 3.Nf3 Nf6 4.Nc3  
dxc4 5.a4 Bf5 6.g3!?**



**Cy:** Eu tu Morshedius?

My opponent and friend, Ali Morshedi, has the rather rude habit of treating your chickenish writer with a certain lack of deference over the chess board. Each time we play Ali disregards my rating and tries to take my head off. There is something in my style which brings his blood to a boil, and soon he weaves plots to accidentally inflict 50 or 60 stab wounds the way Caesar's friends in the senate did.

Pretty brave to sac a pawn (dubiously I might add!) when he led the tournament and only needed a draw. Ali said he prepped this rare move for me, banking on the educated guess that I wouldn't cover this line in my *Move by Move: The Slav* book! A pretty good deduction/ambush attempt on his part, since it turned out he was right. I begged my editor, GM John

Emms, to sneak the game into the book but it was too late and it won't appear in the book.

So here it is in another incarnation in R&F.

**Jack:** You are too generous with "!"? I think 6.g3? leaves White struggling to hold Black to a small advantage. There are a variety of similar gambits in the Catalan that usually offer White fair compensation, but this position is different because Black's Bishop is not entombed at c8. I do not see a remedy for White after ...Nb8-a6-b4.

**6...Na6**

**Cy:** Nature abhors a vacuum and b4 beckons.

**7.Bg2**

**Cy:**

a) 7.Nh4 e6 8.Bg2 Nb4 9.Nxf5

**(Jack:** *White would like to continue 9.e4? Bg4 10.f3 but he cannot stand 10...Nd3+ 11.Ke2 Bh5 12.Be3 g5! 13.Bxg5 Qxd4 14.Be3 Qe5--+) 9...exf5 10.0-0 Be7 11.Bh3 g6 12.Bh6 Bf8 13.Bxf8 Kxf8 Husek,Z-Kiss,P Sarospatak 1996. White didn't have enough for the pawn.;*

b) 7.Bg5 Ne4 (7...Nb4 also looks good.) 8.Bd2 Trommsdorf,F-Bardel,S Val Maubuee 1989. 8...e5! 9.dxe5 Qb6! 10.Nxe4 Bxe4 White is in big trouble. ...Nb4 and ...Rd8 are in the air.

c) 7.Bf4 Nb4 8.Rc1 Hardie,J-Morris,C Cardiff 2004. 8...e6 9.Ne5 Nfd5 10.Nxc4 Nxf4 11.gxf4 Qc7 12.e3 0-0-0!? leads to a sharp game where I like Black's chances:

1. That Knight sits pretty on b4.

2. Black is slightly ahead in development.

3. My guess is that Black has the safer King. He can pry White open later on with ...h6 and ...g5.

**7...Nb4 8.0-0 Bc2**

**Cy:** Black is a thief, but an honest thief, who worked hard to steal a pawn, so the intention is to hang on to it for dear life with ...Bb3. Of course this does sideline the Bishop but I judged, rightly or wrongly, that Black should still survive White's attack.

**Jack:** What attack? White cannot even complete development.

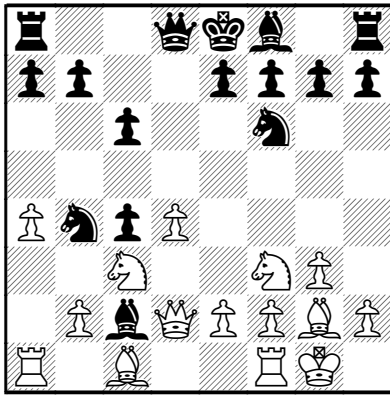
**Cy:**

a) 8...e6 9.Bf4 Be7 10.a5 Rc8

Just in case White has funny ideas about tossing in a6 at a later date. 11.Ne5 Bc2 12.Qd2 Bb3 13.Rfc1 0-0 14.Ne4 Nfd5 15.Nc5 (15.Nxc4 Nxf4 16.gxf4 Na2! also wins material.) 15...Nxf4 16.Qxf4 Bg5 Sneaky! Black picked up the exchange. Sjoberg,M -Kuporosov,V Katowice 1991.;

b) 8...Nc2 A move for the chicken hearted. Black draws since White doesn't get enough if he insists on playing for the win. In the words of the young Josh Waitzkin from *Searching for Bobby Fischer*: "Take the draw!" 9.e4!? (9.Rb1 Nb4 10.Ra1 is correct.) 9...Nxa1 10.exf5 Nb3 11.Bg5 Qb6 12.d5 Rd8 13.Be3 Qa6 14.Nd4 Nxd4 15.Bxd4 Nxd5 16.Nxd5 cxd5 17.Re1 h5 18.Re5 h4 19.Bxd5 hxg3 20.hxg3 Qd6 21.Kg2?? (missing 21.Bxb7! the d4 Bishop is taboo due to a Bishop check on c6.) 21...f6 22.Qg4 fxe5 23.Be6 0-1 Miladinovic,I-Galic,I Cetinje 2009. White resigned before the inevitable 23...Qc6+.

**9.Qd2**



### 9...Bb3

**Cy:** Apparently a new move in the position. Why is it that all my theoretical novelties are involuntary? Please don't answer. It was a rhetorical question!

**Jack:** I like this maneuver. From b3, the Bishop not only protects c4, it also sets up ...Nb4-c2 and prevents Rf1-d1 or Nc3-a2.

**Cy:** 9...a5 10.Na2 Ne4 11.Qf4 Nd5 12.Qh4 Nd6! 13.Ng5 Nf5 14.Qh5 g6 15.Qf3 Nf6 16.e3 h6 17.Nh3 g5 White's game was a train wreck. Lin Weiguo-Torre, E Shenzhen 1992.

9...e6 10.Na2 Ne4 11.Qf4 Nd5 12.Qe5 Nef6 13.Nc3 Bf5! (with the nasty threat ...Bd6!) 14.Nxd5 cxd5 15.Nh4 Bc2 16.Bf4 h6 17.Rfc1 Bh7 18.a5 g5. White was busted. Shabalov, A-Schwartzman, G Chicago 1994.

### 10.e4

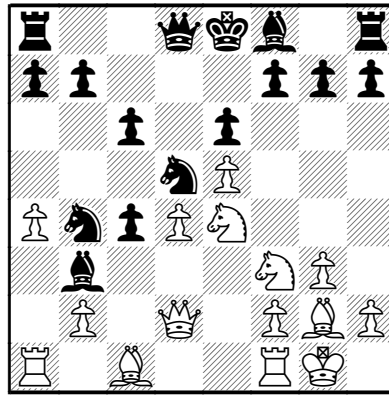
**Cy:** The alternative plan is to try to slowly win his pawn back with 10.e3 e6 11.Qe2 (**Jack:** *I tried to make 11.Ne5 work, but I don't see a useful move for White after 11...Nd7 12.f4 Be7*) 11...Bd6 12.Ne5 (12.Nd2? Bc2!) 12...Bxe5 13.dxe5 Nd7 14.f4 Nc5 I just didn't believe in White's Kingside attack as full compensation for the pawn.

### 10...e6 11.e5

**Cy:** The typical Slav Gambit plan: Give up d5; get e4.

**Jack:** It's too late for White to worry about niceties such as control of d5. If he makes a "normal" move, such as 11.Qe2 Black will grab a center pawn by 11...Nc2 12.Rb1 Nxd4 13.Nxd4 Qxd4 and I don't see a shred of compensation.

### 11...Nfd5 12.Ne4



**Cy: Combination Alert:** With his last move White commits to a second pawn sac. How do we pick up another pawn?

### Answer:

### 12...Nc2

**Cy:** Step 1: Deflect the Rook from a1.

**Jack:** I rarely approve of spending several moves to capture a worthless Queenside pawn, but I won't criticize Black's decision here. The position he obtains seems clearer than the computer-advocated line of 12...Be7 13.Qe2 Bc2 14.Ne1 Bd3 15.Nxd3 cxd3 16.Qg4.

### 13.Rb1

**Cy:** Step 2: Eat the pawn.

### 13...Bxa4 14.Qe2 Ncb4

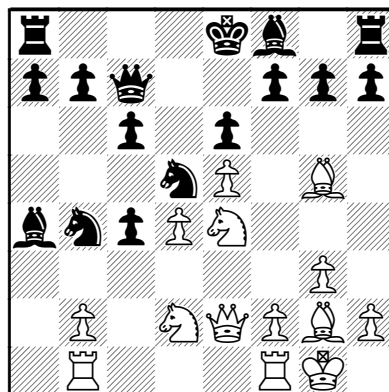
**Cy:** The c-pawn remains safe due to the ...Bb5 skewer. Maybe I should activate the Queenside pawn majority with 14...b5.

### 15.Bg5 Qc7

**Cy:** I considered 15...Qd7 but preferred to keep d7 open for the King just in case he needs to make a quick getaway.

A bit far fetched/paranoid? No. Expunge this crazy thought from your mind! Later on I played ...Kd7.

### 16.Nfd2!?



**Cy:** He prepares to sac an exchange to swing his Queen to the Kingside.

**Critical Decision:** 16...Bc2 wins the exchange since it attacks both Rook on b1 and ...Bd3. Should I get greedy and go for it?

**Jack:** No. Black already has enough material to win. He needs to stop White's threats and regain the initiative.

Objectively, both 16...Bc2 and 16...h6 should succeed, so Black should search for the surest win. I think there are fewer chances of getting swindled after 16...h6.

### 16...h6

**Cy: Answer:** Why oh why do I disregard greedy instincts?

Black should take the bait with 16...Bc2! 17.Rbc1 (17.Nxc4? Bd3 18.Ned6+ Bxd6 19.Nxd6+ Qxd6 20.Qxd3 Nxd3 21.exd6 N3b4 wins since d6 is also a goner. **Jack:** *Also after 17.Nd6+? Bxd6 18.exd6 Qxd6 19.Nxc4 Qc7 White will have to drop the exchange.*) 17...Bd3 18.Qh5 Bxf1 19.Bxf1 b5 20.b3 cxb3 21.Nxb3.

It's doubtful White has enough for the material.

**Jack:** That's true, but I have to admit that my first thought was 21...a5 22.Bxb5 a4 23.Nbc5 cxb5? 24.Nxe6 Qd7 which looked safe until Fritz revealed 25.Nd6+ Bxd6 26.Nxg7+ Kf8 27.Bh6. Black will be lucky to draw! The fact that 23...Bxc5 would improve means little. Even the "clearly winning" position after 21. Nxb3 contains enough danger to frustrate Black.

### 17.Qh5 Bb5?!

**Jack:** I consider 17...Bb5? Black's first mistake of the game.

**Cy:** Defense is harder than attack in a rapid game.

I should quickly activate my Queenside pawn majority with 17...b5 18.b3 cxb3 19.Nxb3 Bxb3 (**Jack:** *This appeals to me very much. I would not want the Knight leaping into c5, where it might prove more valuable than a Rook.*) 20.Rxb3 a5.

If I shove the a-pawn down the board, his pieces get distracted from the attack.

**Jack:** Agreed. Thanks to Black's

Knights and well-placed (!) Rook at a8, the a-pawn takes the starring role.

In addition, Black's Bishop comfortably neutralizes White's Knight.

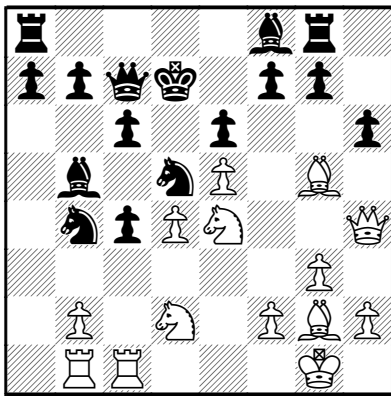
### 18.Rfc1 Rg8

**Jack:** A true apostle of greed would prefer 18...Nd3 19.Rc2 Nb6.

### 19.Qh4!?

**Jack:** After 19.Be3 it appears that White will recover the pawn at c4 and activate most of his pieces. Black still stands better, but, for the first time in the game, his victory no longer seems inevitable. Not 19.Nxc4?? Bxc4 20.Rxc4 because 20...g6! 21.Qh3 hxg5 safely grabs a piece. Black does not fear 22.Qh7 Rg7.

### 19...Kd7!?



**Cy:** I told you so! I looked at the line 19...f5!? 20.exf6 hxg5 21.Qh7 Qf7 22.Nxg5 Nxf6 23.Qh3 Qd7 24.Nxe6 Nd3 25.Re1 Nxe1 26.Rxe1.

I saw to this point and chickened out.

**Jack:** I would have chickened out after 24. Nxe6.

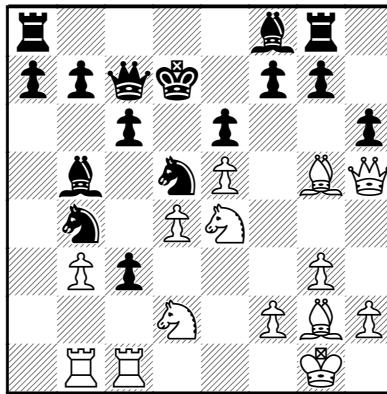
### 20.b3

**Jack:** White has worked his way back into the game with a bewildering array of dubious sacrifices, but he is no longer compelled to go for broke.

The sensible retreat 20.Be3 lowers the stakes while keeping some pressure.

If Black responds cautiously with 20...Be7 21.Qh5 Raf8 then 22.Nxc4 Bxc4 23.Rxc4 Kc8 24.Bd2 threatens 25. Nc5, and Black's advantage is gone.

### 20...c3 21.Qh5!



### 21...g6!

**Cy:** Three White pieces hang. I worked out the following short but forcing line: 21...hxg5?? 22.Qxf7+ Ne7 23.Nc5+ Kc8 24.Nde4 I didn't think Black survived.

**Jack:** I think 21...g6! is fine but I looked at 21...Kc8! first. Then 22.Nc4 (it's easy to see that 22.Nxc3 Nxc3 23.Rxc3 g6 24.Qh4 hxg5 25.Qh7 Rg7 26.Qh8 Qe7 27.Ne4 Kc7 kills White's threats.) 22...g6 23. Qf3 hxg5 is similar to your line with 21...g6 22. Qf3 Kc8, while 23.Qh3 hxg5 24.Ncd6+ Bxd6 25.Nxd6+ Kb8 26.Qh7 Rd8-+ seems airtight for Black.

### 22.Qf3

**Cy: Critical Decision:** I considered 22...f5 and 22...Kc8. But which one? Time was also running very low.

**Jack:** I would advise you to disregard 22...f5 if there were a clear alternative, and 22...Kc8 definitely qualifies.

### 22...f5?!

**Cy:** The idea was to plug f6 with a pawn. I consolidate after 22...Kc8! 23.Nc4 c2 24.Rb2 hxg5 25.Ncd6+ Bxd6 26.Nxd6+ Kb8 and White has nothing. Black soon plays ...a6 and ...Ka7 consolidating.

Also winning was 22...Rg7 23.Bxh6 cxd2 24.Bxg7 dxc1Q+ 25.Rxc1 Ke8.

### 23.exf6 cxd2

**Cy:** The rapid chess/time trouble golden rule: Take onto Knights before taking onto Bishops. Knights are trickier pieces and when your clock runs low they increase the opponent's swindling prospects.

### 24.Bxd2

**Jack:** By choosing 22...f5, Black introduced new elements (passed f-pawn, half-open e-file, weakling at e6)

that could drastically alter the evaluation of the position. When there's no time to make a careful assessment, such changes randomize the outcome, and that's good news for White.

### 24...Ke8

**Jack:** I suspect Black is in serious trouble after 24...Ke8. Fritz still claims a win for Black with 24...Kd8 25.Bh3 Qf7.

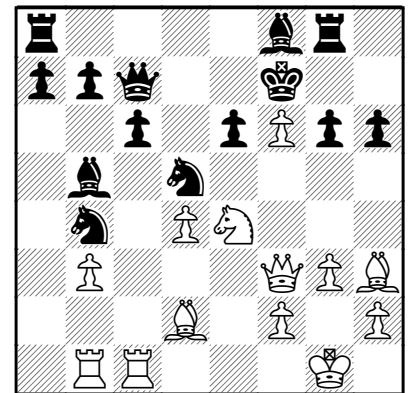
### 25.Bh3!

**Cy:** Target e6: How to defend it?

### 25...Kf7?

**Cy:** Not this way! After the correct 25...Qd7! the position remains totally unclear, with White getting full compensation for his piece.

**Jack:** You may be underestimating White's attack! The plausible defense 26.Re1 Nc7 27.Bf4 Nbd5 is destroyed by 28.Bxc7 Nxc7 29.d5! cxd5 30.f7+ Qxf7 31.Nf6+ Kd8 32.Bxe6 according to Fritz. Sturdier is 25...Qf7 26.Re1 Kd8 but White still has winning chances after 27.Nc5 Bxc5 28.dxc5 Re8 29.Bxb4 Nxb4 30.Qf4 Nd3 31.Qd6+ Qd7 32.f7±.



**Combination Alert:** White to play and win.

**Cy: Answer:**

### 26.Bxe6+!

**Cy:** I saw this sac but missed an idea on his next move.

### 26...Kxe6

**Cy:** In my child-like innocence, I thought Black was winning. Is innocence an absence of guilt or a virtue in itself?

### 27.Re1?

**Cy:** We were both out of time and playing with seconds on the clock. As my opponent paused to look for a knockout I realized that the clear-

ance shot 27.f7! won for White.

Black's King isn't in on the joke; he is the joke. Luckily Ali hadn't noticed that my normally rosy complexion had mutated rapidly to the lemon color of a dead bullfrog's underbelly.

a) 27...Rg7 28.Nc5+ Bxc5 29.Re1+ Kd7 30.Qg4+ and mate next move.

b) 27...Qxf7 28.Ng5+! hxc5 29.Re1+ wins the house.

c) 27...Rh8 28.Ng5+! hxc5 29.Re1+ Kd7 30.Qg4+ Kd6 31.Qe6 mate.

**27...Kf7**

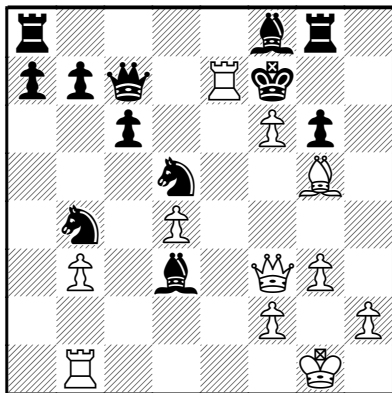
Cy: White's attack comes to a halt since Black's King scurries back into the cubby hole on f7. It's such a pleasant surprise when our dead loved ones come back to life.

Jack: I don't believe in reincarnation, but I've heard of near-death experiences. Did you see a brilliant white light?

**28.Ng5+**

Cy: As good a try as any. Nothing works anymore. At this point White's generosity outstrips his ability to pay.

**28...hxc5 29.Bxc5 Bd3 30.Re7+**



Cy: Dramatic stuff, but the trouble is it just doesn't work.

**30...Bxe7 31.fxe7+ Ke8**

Cy: Okay, I feel a lot better now. Thanks for asking.

**32.Re1 Qd6 33.Bh6**

Cy: Threatening the non-threat: Qf8+.

**33...Bf5 34.g4 Be6 35.Qf8+**

Cy: Black can even take the Queen.

**35...Kd7 0-1**

Cy: The King simply orbits the e-pawn. Whew! Jerry Garcia would agree: "What a long, strange trip it's been!"

The next game was played online on the Internet Chess Club in the first round of the US Amateur Team Tournament Playoffs. Our USAT West champions Team USC played at the USC computer lab and met the USAT North champions, *For Whom The Azbel Tolls*. They were playing in Waterford, Wisconsin.

This game was the last to finish, and USC needed a win to tie the match. Although USC did not succeed, we get to see how close it got! - Ed.

**Friedel, Joshua (2529) -**

**Peters, Jack (2370)**

**[B04] Alekhine's Defense**

**USAT playoff G/90 +5 sec ICC (1)**

**Internet, 26.03.2011**

**1.e4 Nf6**

Jack: A few days before the game, I learned that I would play Black. I reviewed many of Friedel's games and found that he mauls 1...c5 and 1...e5.



Jack Peters: among the lab mice.

I decided to choose Alekhine's Defense, mostly for surprise value.

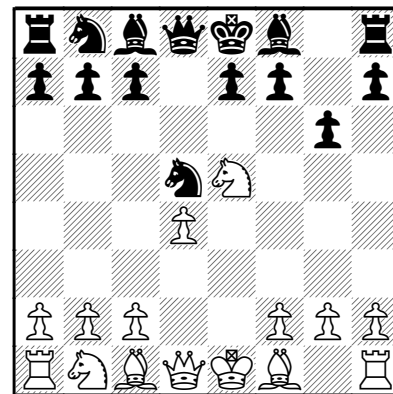
Cy: (!?) What the hay! Having never seen Jack play the Alekhine's Defense, one can only attribute his decision to some rift in the time/space continuum. It seems we chess players rely on the devious more and more as we get older!

**2.e5 Nd5 3.d4 d6 4.Nf3**

Jack: This Modern System is by far the most popular among grandmasters.

Cy: I played the Black side of Alekhine's through the 80's and 90's, only to abandon it because I couldn't stomach the obnoxious Exchange line which runs 4.c4 Nb6 5.exd6 exd6 and Black gets a solid but prospectless position. How to win from such a position against a 2300 player? (5...cxd6?! has been worked out to a clear plus for White for many years.)

**4...dxe5 5.Nxe5 g6**



Jack: Tim Taylor's "Alekhine Alert" concentrates on 5...c6 but also recommends 5...g6. I liked retaining the option of ...c7-c5. The drawback is that c2-c4 will chase Black's Knight to the poor square b6 instead of the more useful c7.

Cy: I always regarded the 5...g6 line as dubious for Black since it cedes White a lot of space and tended to rely on the 5...c6 line for exactly the reason Jack gives: It opens c7 for the knight in case White plays c4. From c7, the knight may later play to e6, pressuring d4.

**6.Be2**

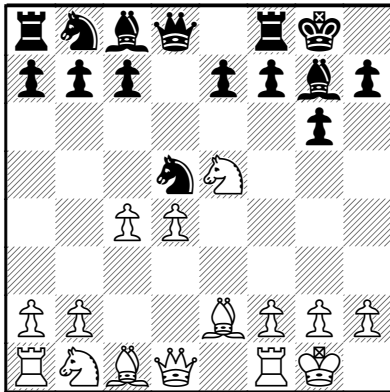
Jack: Best, according to Taylor. Frequently seen, but not too dangerous for Black, is 6.Bc4 c6. Sometimes

Black follows with ...Bc8-e6, protecting d5 and f7.

**6...Bg7**

**Cy:** I would still play 6...c6.

**7.0-0 0-0 8.c4**



**Jack:** Taylor recommends 8.Bf3 c6 9.Re1 Bf5 10.c3.

**8...Nb6**

**Jack:** I made this normal retreat quickly. Only later did I remember that Taylor advocated 8...Nb4 instead.

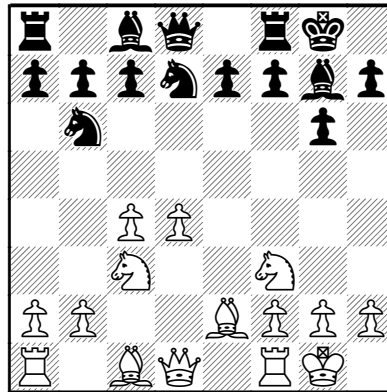
If 8...Nb4, then 9.a3 N4c6 10.Nxc6 Nxc6 11.d5 Nd4. Taylor cites this position as evidence in favor of 8...Nb4, and it does indeed make 9. a3? look foolish.

My memory lapse may have aided me, though, because Fritz points out a serious problem with 8...Nb4. What does Black do after 8...Nb4

9.Nf3 Bf5 10.Nc3, when 10...Nc2? 11.g4! Nxa1 12.gxf5 is terrific for White?

**Cy:** I agree with Jack. 8...Nb4 9.Nf3! looks like it yields White a nagging space edge.

**9.Nc3 N8d7 10.Nf3!**



**Jack:** Quite strong. White threatens 11. c5, trapping Black's Knight. My opponent has reacted very well to my "surprise" opening.

**Cy:** (!) Friedel utilizes the principle: The side with space should avoid exchanges.

**10...c5**

**Jack:** Apparently a novelty, which indicates both that 6.Be2 has not been thoroughly investigated yet and that Black is struggling. Neither 10...c6 nor 10...e5 11.Bg5 f6 12.Be3± is attractive.

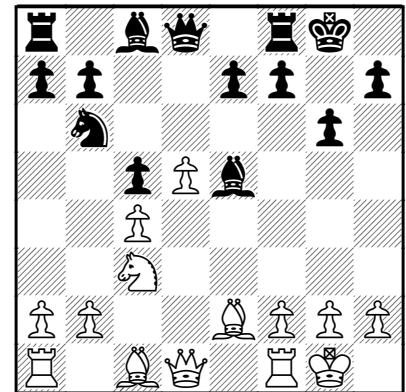
**11.d5**

**Jack:** I prefer 11.d5 to 11.Be3 cxd4 12.Bxd4 e5 13.Be3 which also favors White. How will Black develop his Queenside?

**11...Ne5**

**Jack:** I sought a trade to relieve the traffic jam at d7.

**12.Nxe5 Bxe5**



**13.Bh6?!**

**Jack:** Harmless. One lackadaisical move throws away most of White's advantage.

Much stronger is 13.Be3 Nd7 14.Qd2±, when White is ready for the middlegame and Black is not.

I looked at 13.Be3 Qc7?! but couldn't find a satisfactory reply to 14.Nb5! Bxh2+ (**Cy:** I don't like 14...Bxh2+?! How about the line 14...Qb8!? 15.Bxc5 a6 16.Nc3 (16. Bxb6 axb5=) 16...Qc7 17.Bxb6 Qxb6 gives Black the Bishop pair and dark square control for the pawn? Still, if given a choice I would take the pawn up side.) 15.Kh1 Qe5 16.Qd2± White threatens 17. f4 and 17. Bxc5.

**13...Re8**

**Jack:** Next ...e7-e6 will activate the Rook, attack d5, and threaten ...Qd8-h4, hitting h2 and the exposed Bishop at h6.

**14.Qd2?!**

**Jack:** Even here, 14.Be3 improves.

**14...Bd7**

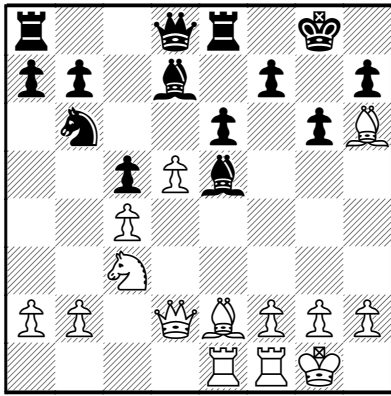
**Cy:** This looks like a wasted tempo. Why not toss in 14...e6 immediately?

Black's Bishop may be better posted on f5 later on.

**15.Rae1 e6! =**



*Danyul Lawrence: what the players saw.*



**16.Bf4 exd5 17.cxd5 Bd4**

**Cy:** 17...Qf6 also looks good.

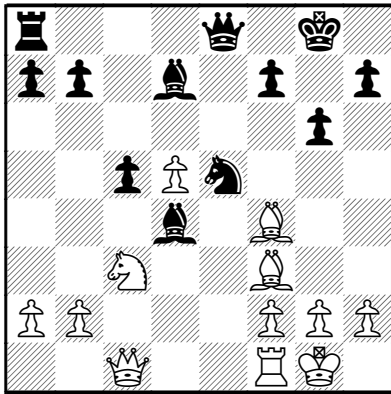
**18.Bf3**

**Jack:** I was worried about 18.d6 which discourages 18...Bc6 because of 19. Nb5, but 18...Qf6 19.Bf3 (not 19.Nb5?? Rxe2!) 19...Nc4= is satisfactory.

**18...Nc4 19.Rxe8+ Qxe8 20.Qc1**

**Cy:** The position now resembles the Qb3 lines of the Grunfeld but one where Black equalized.

**20...Ne5**



**21.Bxe5?!**

**Jack:** Friedel is an aggressive player who hates to retreat. Here he wants to keep his pieces active, but yielding the dark squares is a significant concession that turns the game

in Black's favor.

**Cy:** (?!) Deja vu. The GM hands over the Bishop pair and dark squares for no perceptible compensation. In our 2004 US Championship game, Friedel made a similar dubious decision when he allowed a structural concession simply because he didn't want to back off. Then he proceeded to resist fiercely and outplayed me from a bad position, holding the draw anyway--exactly like this game. Youth and talent have the annoying habit of compensating for strategic deficiencies!

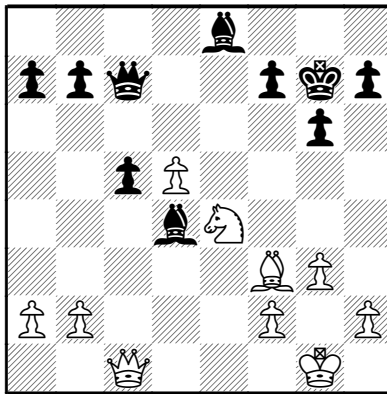
**Jack:** An alternative is 21.Be4 Ng4 (I did not trust 21...f5, which exposes Black's King.) and after 22.Qc2 Be5 Black will control the dark squares d4, e5 and d6.

Safest is 21.Be2 with equality.

**21...Qxe5 22.Re1 Qc7 23.g3**

**Jack:** I welcomed 23.d6 Qxd6 24.Bxb7 Rb8 25.Bf3 Be6. The Bishops thrive in the open position, and the isolated c-pawn isn't too vulnerable.

**23...Re8 24.Rxe8+ Bxe8 25.Ne4 Kg7**



**26.b3**

**Jack:** If 26.b4 b6 27.bxc5 bxc5 all

four Queenside pawns are isolated. I think the passed c-pawn is the strongest.

**Cy:** I'm not so sure about the size of Black's advantage after 28.Nd2! Qe5 (or 28...Qb6 29.Nb3 c4 30.Qxc4 Bxf2+ 31.Kg2) 29.Kg2 Bb5 30.Nc4 Qf6 31.Qc2. Clearly Black stands better but is it enough to win? I don't know.

**26...Bd7 27.d6**

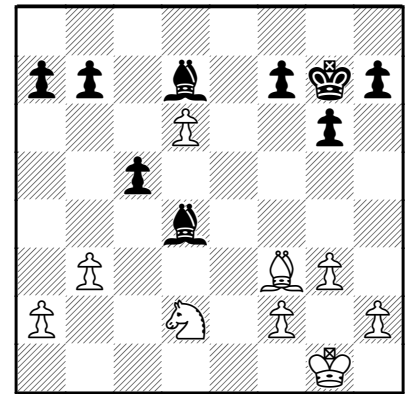
**Jack:** If 27.Qg5 Bf5, Black intends to chase the Queen back with ...h7-h6. The impetuous 28.d6 lets Black counterattack with 28...Qa5! 29.Qe7 Qxa2 when 30.d7? loses to 30...Bxe4 31.d8Q Qxf2+.

**27...Qa5 28.Qd2**

**Jack:** Probably best, although the ending is unpleasant for White.

**Cy:** Agreed. 28.a4 Qb4 doesn't look very tempting for White.

**28...Qxd2 29.Nxd2**



**29...b5**

**Jack:** Around this time, it became clear that our team would score 1-2 on the other boards. I needed to squeeze out a win in this endgame to tie the match.

**Cy:** (?!) This natural move allows White a measure of piece activity. White is hard pressed to save himself



Phillips, Peters, Lawrence, and Balasubramanian in the lab: the loneliness of the long distance chess players.

after 29...Bc3! 30.Ne4 Bb4! and now White is in deep trouble:

1. Black threatens ...f5 followed by ...Kf6 and ...Ke5.

2. Black is ready to mobilize his queenside majority with ...b5 and ...c4.

### 30.Bd5!

**Cy:** Multipurpose.

1. The move centralizes.

2. It watches over the ...c4 break.

3. It hits f7, in case Black had ...Kf6 and ...Ke5 ideas.

### 30...f5

**Jack:** Threatening 31...Be5.

### 31.Nf3 Bb2

**Cy:** ?! Again, logical since Black wants f6 for his King, but inaccurate since it allows White's next move. Better to cut off White's coming idea with 31...Bf6! with the intention of ...h6 (if necessary) ...g5 ...g4 followed by ...Be5 picking off d6. For example: 32.Kf1 g5 33.h4 h6 34.hxg5 hxg5 35.Ke2 g4 36.Nd2 Be5, and the d6 pawn falls and White can only await destiny's near certain kick in the rear end.

### 32.Ng5!

**Jack:** Three excellent moves by White have nearly solved his problems. I had placed 32.Ng5 in the "That can't work" category, and now I spent several minutes correcting my judgment.

**Cy:** A logical extension of White's initial concept. He simultaneously eyes e6 and h7.

### 32...Kf6

**Cy:** (!) A good practical decision even though it shouldn't work.

**Jack:** Black's only winning attempt. The draw would be certain after 32...h6 33.Ne6+.

### 33.f4?!

**Jack:** My opponent was short of time and missed the simplest path to a draw.

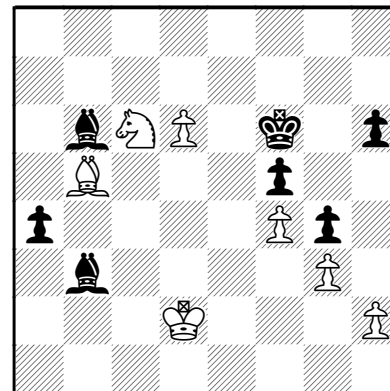
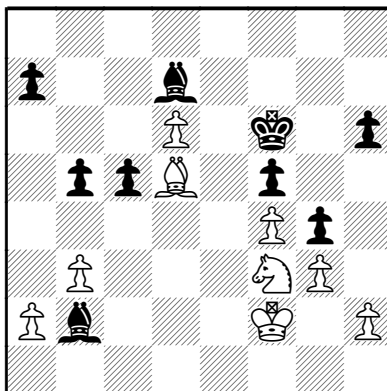
I considered 33.Nxh7+ Ke5 34.Bf7 Kxd6 promising for Black, which seems correct after 35. Bxg6? c4. However, 35.Nf8! should save White.

**Cy:** The problem is, it is very hard to spot 35.Nf8! in the analysis when short on time.

### 33...h6 34.Nf3

**Jack:** 34.Nf7? Be6 is dangerous only for White.

### 34...g5 35.Kf2 g4



**Cy:** (!) Now h2 is vulnerable to ...Bg1 tricks for the rest of the game.

### 36.Ne1 Bd4+ 37.Ke2 Be6 38.Bc6 c4 39.Bxb5

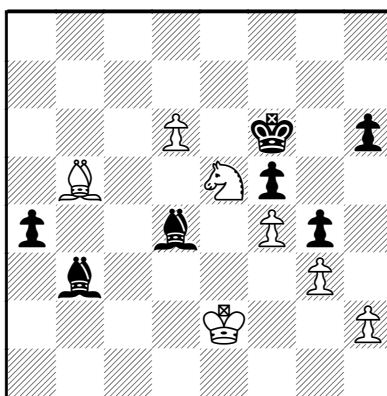
**Cy:** (?) 39.b4! holds.

**Jack:** During the game, I assumed 39.b4 c3 40.Bxb5 Bxa2 would favor Black, but 41.Nc2 should draw without difficulty.

### 39...cxb3 40.axb3 Bxb3 41.Nd3 a5

**Jack:** The a-pawn is very fast. I didn't have time to calculate, but I felt that Black was winning. That shows my optimism rather than accurate judgment, as I think now that White should draw fairly easily.

### 42.Ne5 a4



### 43.Nc6??

**Jack:** The right defense is 43.d7 Bb6 44.Kd3 a3 (**Cy:** Black may have some practical chances to win after 44...Ke7! but after 45.Nc4 Bg1 46.Na5 Be6 47.Bxa4 h5! 48.Nc6+ Kxd7 49.Nd4+ Ke7 50.Nxe6 Kxe6 51.Bb3+ Kf6 52.Ke2 Bxh2 53.Kf2 h4 it should be a draw anyway.) 45.Kc3 a2 46.Kb2 and White will capture the a-pawn and draw. He threatens both 47. Nc6 and 47. Bc4.

### 43...Bb6 44.Kd2

### 44...Ke6?

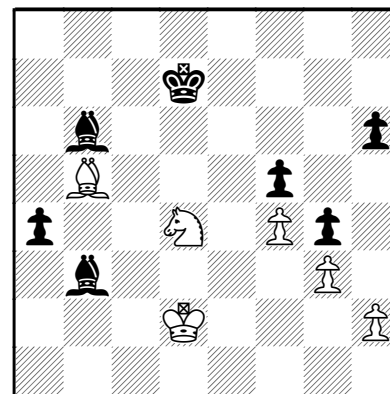
**Jack:** The first of many missed opportunities. The variation 44...a3! 45.Kc3 a2 46.Kb2 Be6 looks similar to the drawing line beginning 43. d7, but there is a significant difference. The d-pawn is less threatening at d6, and 47.d7 Bxd7 48.Kxa2 lets Black gobble up the Kingside by 48...Bg1.

**Cy:** Correct.

### 45.d7!

**Jack:** Again, White should draw.

### 45...Kxd7 46.Nd4+



### 46...Kd6?!

**Jack:** I also suffer from the "always-go-forward" mindset.

**Cy:** Just be happy you don't suffer from the "always retreat" mindset like me!

**Jack:** The alternative 46...Ke7!? makes a difference if White replies 47.Nxf5+? as 47...Kf6 48.Bxa4 Bxa4 49.Nxh6 Bd7 preserves a pawn and wins routinely. However, 46...Ke7!? 47.Nxb3! axb3 48.Bd3 Kf6 49.Ke2 seems to draw anyway. Black cannot capture at h2 without getting his Bishop trapped, and bringing the King to the Queenside drops the pawn at f5. For example: 49...b2 50.Kf1 h5 51.Kg2

Bd4 52.Kf1 Ke6 53.Kg2 Kd5 54.Bxf5 Kc4 55.Kf1 Kc3 (or 55...Kb3 56. Bb1 => 56.Ke2 Bg1 57.Kf1 Bd4 (not 57... Bxh2?? 58. Kg2 +-) 58.Ke2 draws.

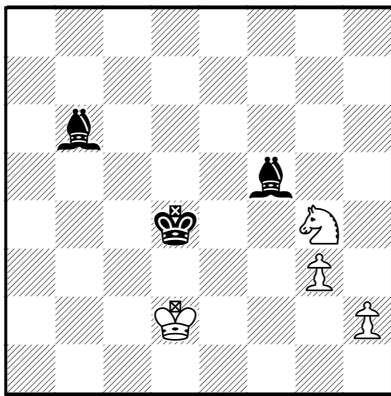
**47.Nxf5+?**

**Cy:** After this White's Knight gyrations prove to be no more than a nervous twitch. 47.Nxb3! holds the draw.

**Jack:** White can force a draw by 47.Nxb3! axb3 48.Bd3 Bd4 (or 48... Ke6 49.Bc4+ Kf6 50.Bxb3 Bg1 51.Ke2 and Black doesn't dare capture at h2.) 49.Bxf5 b2 50.Kc2 h5 51.Bg6 Bg1 52.Bxh5 eliminating all of Black's pawns.

**47...Ke6?**

**Jack:** Easier is 47...Kc5 48.Bxa4 Bxa4 49.Nxh6 Bd7 50.f5 Kd4 51.Nxg4 Bxf5--



and Black will soon pick off White's pawns.

**Cy:** Yes, but two practical problems to deal with:

1. Bishops versus Knight is a nightmare to win. I found myself with the Bishops vs. Knight 2 times over the board, winning one and drawing the other when the director wouldn't allow the game to go over the 50-move rule (which FIDE allows).

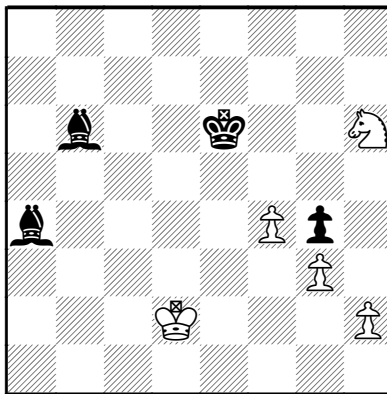
2. At this stage both players live off the 5 second increment--meaning, the parties tend to make fools of themselves for the rest of the game!

The Knight constantly threatens forks, while the Bishops menace pins and skewers in every direction.

**48.Bxa4!**

**Jack:** White cannot stand 48.Nxh6? a3 49.Kc3 a2 50.Kb2 Bd4+.

**48...Bxa4 49.Nxh6**



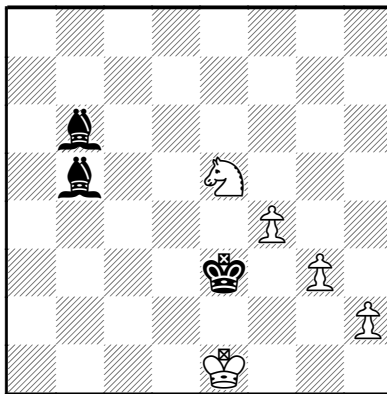
**Jack:** White will capture Black's last pawn, but he shouldn't save the game. As Tal showed in a 1961 world championship game against Botvinnik, two Bishops can beat a Knight. Endgame tablebases confirm that, in the general case without any pawns, the Bishops should win.

**Cy:** In theory! As I mentioned above, it isn't easy over the board, with zero time on the clock.

**49...Ba5+**

**Jack:** Hoping he would let my Bishop reach d1 to save my pawn. More direct was 49...Bg1 50.Nxg4 Kf5 51.Ne3+ Ke4.

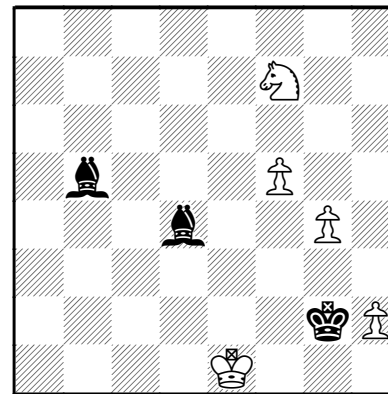
**50.Ke2 Bb5+ 51.Ke3 Bb6+ 52.Kd2 Kd5 53.Nxg4 Kd4 54.Ke1 Ke4 55.Ne5 Ke3**



**Jack:** Now Black is making progress. The Bishops are extremely powerful, rendering the pawns harmless. I only wish I had more than two minutes plus five seconds per move to deal with the pesky Knight!

**Cy:** (!) A very confident move. Jack understands that mate trumps promotion to a queen!

**56.Ng4+ Kf3 57.Ne5+ Kg2 58.g4 Be3 59.f5 Bd4 60.Nf7**



**60...Kf3**

**Jack:** Dreaming of checkmate. There were at least two other methods:

60...Bc3+ 61.Kd1 Bd3--+. This formation immobilizes the pawns and prevents White's King from assisting them.

60...Kxh2 61.g5 Kg3 62.f6 Kf4 63.Nd8 (or 63.Nd6 Bd3--+) 63...Bc4 64.f7 Bg7--+ and the pawns are doomed.

**Cy:** I prefer the second way.

**61.g5 Ke3**

Threatening 62...Be2 and 63...Bc3 mate.

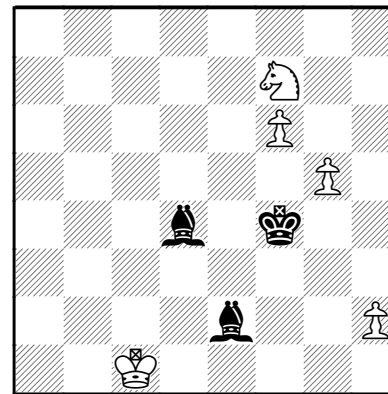
**62.Kd1**

**Cy:** (!) One factor of tenacious defense is to never fall for a cheapo, which White would after 62.f6?? Be2!

**62...Be2+ 63.Kc1 Kf4**

**Jack:** Unnecessarily changing plans. The route to checkmate is 63...Kd3 64.Kb1 Kc3 65. h4 Kb3 66. f6 Bb2 67. Nd6 Bd3 mate. To avoid it, White would have to abandon his pawns by something like 65.Nd6 Bd3+ 66.Kc1 Bc5 67.Nb7 Be3+ 68.Kd1 Bxg5--+.

**64.f6**



### 64...Bh5?

**Jack:** Overlooking the reply. Much easier was 64...Bc4 65.Nd6 Be6 66.h4 (or 66.f7 Bg7 67.Ne8 Bf8+) 66...Be5 67.Nb5 Kg4+.

### 65.Nd8!

**Cy:** The Knight throws all kinds of time trouble obstacles at Jack by popping up uninvited.

**Jack:** Relying on 65...Kxg5?? 66.Ne6+.

### 65...Be3+

**Jack:** Black is still winning, but he needs to bring his King back to d7 to chase the Knight before he can capture the pawns.

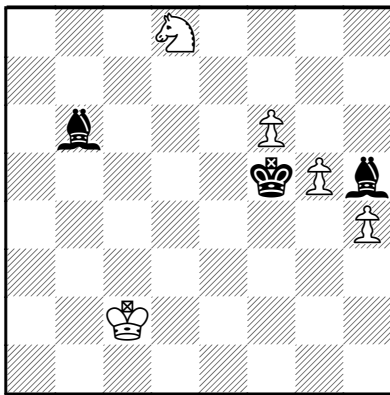
### 66.Kc2 Kf5

**Jack:** Not 66...Kxg5?? 67.f7 Bc5 68.Ne6+ drawing.

### 67.h4

**Cy:** 67.f7! should hold the game. For example: 67...Bc5 68.h4 Ke5 69.Kd3 Bf8 70.Ke3 Kd6 (70...Bg4 71.Nc6+ Ke6 72.Ke4 Bd1 73.Ne5 Bg7 74.Nd3 Kxf7 75.Nf4 with h5 to follow and a drawn position.) 71.Ke4 Kd7 72.Kf5! Kxd8 73.Kf6! with a draw.

### 67...Bb6



### 68.Nc6

**Jack:** After 68.f7 Bc5 69.Kd3 Ke5! 70.Kc4 Bf8, Black's King will reach d7.

**Cy:** White may still hold the draw even there.

For example: 71.Kd3 Kd6 72.Ke4 Kd7 73.Kf5! Ke7 (73...Kxd8 74.Kf6=) 74.Nb7 Kxf7 75.Nd8+ Kg8 76.Ne6 Bd6 77.Nf4 Be8 78.h5.

I don't think Black can make progress. 78...Bd7+ 79.Ke4 Bg4 80.Nd5 Kf7 81.g6+ Kg7 82.Ne3! with a draw.

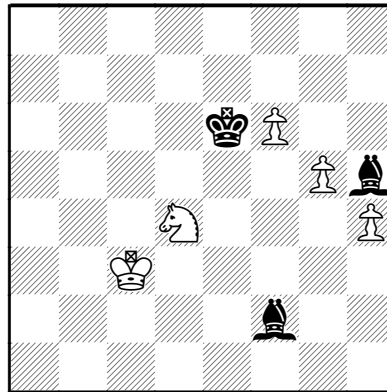
There are many paths here for both sides but my intuition tells me White should hold after 68.f7 since:

1. His pawns are deeply embedded.

2. White's Knight and King are centralized.

3. Black's King is pushed back and kept at bay.

### 68...Ke6 69.Kc3 Bf2 70.Nd4+



### 70...Kf7

**Jack:** Also good is 70...Ke5 71.Nc6+ Kd5 but I saw 72.Ne7+ Ke6 73.g6 and didn't notice that Black can capture all of the pawns by 73...Bxh4 74.g7 Bxf6+ 75.Kd3 Bxg7+.

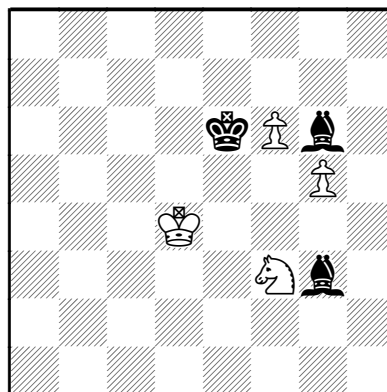
### 71.Nf5 Bg6 72.Nd4

**Jack:** Black welcomes 72.Ne7 Bb1 73.h5 Bh4+.

### 72...Bxh4 73.Nf3

**Jack:** Nor does 73.Nc6 Bh5 74.Ne5+ help. Black wins with 74...Ke6 75.f7 Ke7 76.g6 Bf6 77.Kd4 Bxg6 78.Kd5 Bf5! (Not 78...Bb1?? because 79.f8Q+ Kxf8 80.Nd7+ draws.) 79.Kd4 Bh8 80.Kd5 Bg7 81.Kd4 Ke6+.

### 73...Bg3 74.Kd4 Ke6

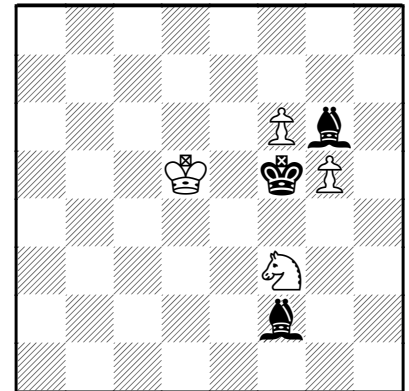


**Jack:** Stopping 75. Ne5+ and planning to bring the King to f5. Despite my stumbles, Black is close to picking off the pawns.

### 75.Ke3 Kf5 76.Kd4 Bf2+?!

**Jack:** Preparing a blunder. Black should chase the Knight by 76...Bh5 77.Ke3 Bf4+ 78.Kf2 Ke4+. Or, if 76...Bh5 77.Nd2 Black avoids 77...Kxg5?? 78. Ne4+ and eliminates the pawns by 77...Be5+ 78.Kd5 Bf7+ 79.Kc6 Bc3 (not 79...Kxg5?? 80. Nf3+) 80.Nf3 Bh5+.

### 77.Kd5



### 77...Kf4??

**Cy:** Black's King gets so far ahead of the parade that he can't hear the music. Still, Jack is too tough on himself penalizing his last move with a ??

**Jack:** Black cannot retract his previous move, as 77...Bg3 78. Nd4+! Kxg5 79. Ke6 draws. His last chance to win is 77...Bf7+! 78.Kd6 Bh5 79.Ne5 (Black can handle 79.Nd2 by 79...Be1 80.Nc4 Bf7 81.Ne3+ Kxg5 82.Ke7 Kg6+) 79...Bg3 but it requires seeing the tricky variation 80.Ke7 Kxe5! 81.f7 Be1! 82.f8Q Bb4+.

**Cy:** Jack's last variation starting 77...Bf7+! is exceptionally difficult to see with time on the clock but impossible to spot without time!

### 78.Ne5

Drawing.

### 78...Kxg5 79.Nxg6

1/2-1/2

“Like as the waves make towards the pebbled shore, so do our minutes hasten to their end...” And so have all those difficult-to-see winning tries. - Ed ♔

# Games from Recent Events

We present two games from the Western Class Championship in Agoura Hills. For the results of that tournament, see *Here and There*, page 27.

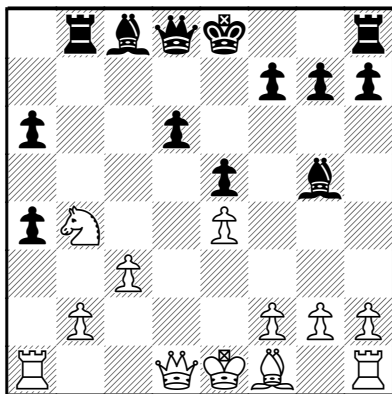
Both games feature instructive maneuvering followed by a well prepared attack.

**Abrahamyan, Tatev -  
Sevillano, Enrico**  
[B33] Sicilian Defense  
Western Class Championship (5)  
Agoura Hills, 13.03.2011  
*1.e4 c5 2.Nf3 Nc6 3.d4 cxd4  
4.Nxd4 Nf6 5.Nc3 e5*

The Sveshnikov Variation.  
*6.Ndb5 d6 7.Bg5 a6 8.Na3 b5  
9.Nd5*

Another main branch of the line is 9.Bxf6, which is played nearly as often.

*9...Be7 10.Bxf6 Bxf6 11.c3 Bg5  
12.Nc2 Rb8 13.a4 bxa4 14.Ncb4  
Nxb4 15.Nxb4*



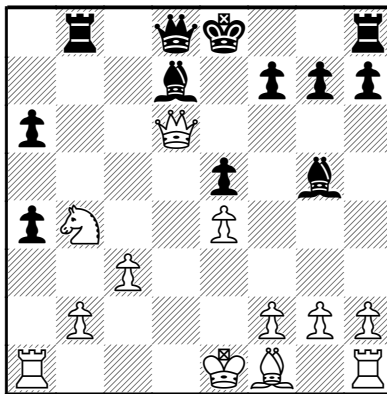
Finally we get to a position with fewer than 100 games in the big databases! Black needs to prevent the fork on c6.

*15...Bd7*

A stand is taken on a4. Hold this pawn! And if the Knight ever goes back to d5, the Rook on b8 is ready for the b2 pawn. But what about Black's valuable center pawns that are now left hanging?

*16.Bxa6!*

Very tempting is 16.Qxd6.



White now threatens Qxe5+ and the Black center pawns are gone.

What is going on here? 16...Be7! 17.Qxe5 0-0 and now three depressing possibilities for White are:

18.Bxa6 Bxb4! 19.cxb4 Qb6, and Black is going to pick up material while White spends time saving his Bishop and King.

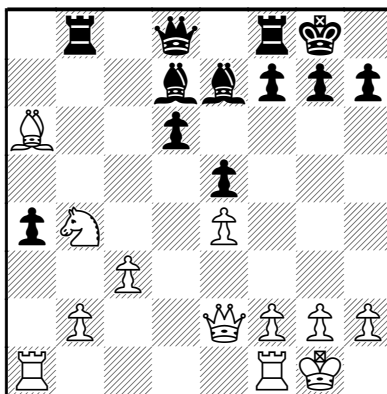
18.Be2? Bxb4 19.cxb4 Rxb4 20.0-0 Qb6, and Black has a very strong attack on the Queenside.

Finally, if 18.Rd1? then Rxb4! 19.cxb4 Bxb4+ 20.Ke2 Re8, and Black's attack on the centralized White King looks decisive.

*16...0-0 17.0-0*

Trying to take the center pawns by 17.Qxd6 is answered as before, by 17...Be7.

*17...Be7 18.Qe2*



*18...f5 N*

At last, a new move. The most usual has been 18...Kh8. Four players with White made four different replies, and the computer likes a fifth.

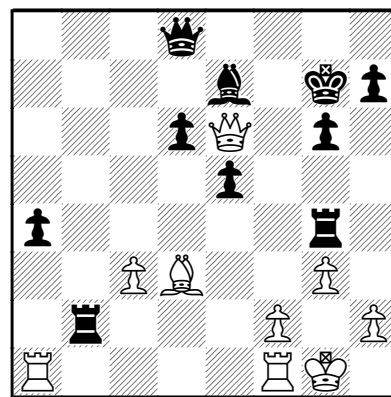
*19.exf5 Rxf5 20.Bd3 Rg5*

More prudent was 20...Rf8, because in the rest of this game, the Rook was not able to help defend, nor was it useful in an attack on the White King.

*21.Qe4 g6 22.Nc6*

White breaks up the Bishop pair, and also weakens the Black a4 pawn, which has kept back the White Rook on a1.

*22...Bxc6 23.Qxc6 Rg4 24.Qd5+ Kg7 25.g3 Rxb2 26.Qe6!*



The question is put to the defender of a4.

*26...Rg5*

An unpleasant retreat, but worse was 26...h5 27.Rfb1 (not 27.h3?? Rxb3+! 28.fxb3 Qb6+ with a quick mate) 27...a3 (if 27...Rxb1+ 28.Rxb1, Black cannot stop the decisive Rb7.) 28.Rxa3 Rxb1+ 29.Bxb1 and Black has to allow either Ra8 or Ra7, either of which will hurt badly.

Also insufficient was sacrificing the exchange with 26...Rd2 27.Qxg4 Rxd3 28.Qc4 Rd2 29.Qxa4+- and the attack is not quite as lethal, but the

material cost was too high.

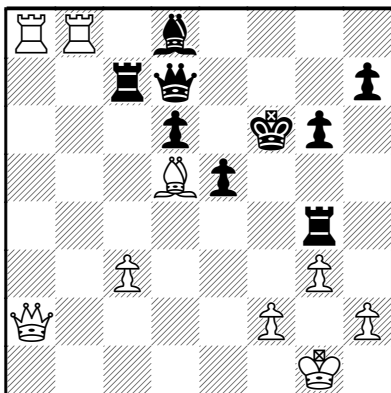
**27.Rxa4**

Now White makes the most of the major pieces, while the Black Rook on g5 is out of play.

**27...Rb7**

The computer sees 27...e4 to create mobility for the Rook at e5, and White responds with 28.Rxe4 Bf6 29.Ra1 Rb7 30.Ra6 Qd7 31.c4 Be7 and it's difficult, but Black looks like he can hold on for quite a while. Computers can be stubborn defenders.

**28.Be4 Qd7 29.Qa2 Rc7 30.Ra8 Bd8 31.Rb1 Rg4 32.Bd5 Kf6 33.Rbb8**

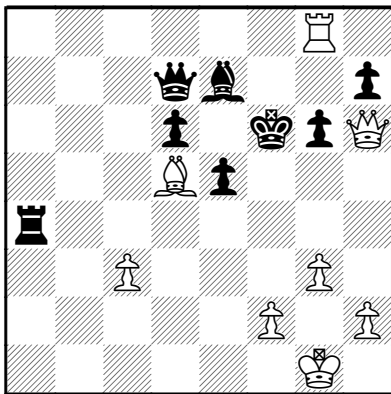


By comparing this position with the previous diagram, you can see the difference seven moves have made. Nearly all the White pieces are placed for decisive action. Now the Queen closes in.

**33...Be7 34.Qd2 Ra7 35.Qh6 Rxa8 36.Rxa8 Ra4**

Or 36...Qb5 37.c4 Qb3 38.Qxh7+-.

**37.Rg8**

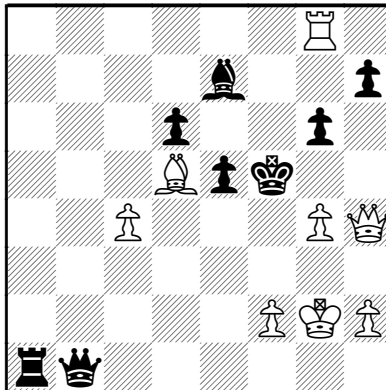


White continues to play very accurately.

**37...Qb5 38.c4**

White could even capitalize now, with 38.Qg7+ Kf5 39.Qf7+ Bf6 40.Qe6+ Kg5 41.h4+.

**38...Qb1+ 39.Kg2 Ra1 40.Qh4+ Kf5 41.g4+ 1-0**



It's over, because of 41...Kf4 42.Qg3+ Kg5 43.h4+ Kf6 (or 43...Kh6 44.g5+ Kh5 45.Bf3 mate) 44.Qf3+ Qf5 45.g5 mate.

White's play shows a variety of motifs: obstacles broken down, accurate maneuvering, and a forced mate!

**Small,Gregg (2262) - Kudryavtsev,Vadim (2226) [B13] Caro-Kann Defense Exchange Variation Western Class Championship (3) Agoura Hills, 12.03.2011**

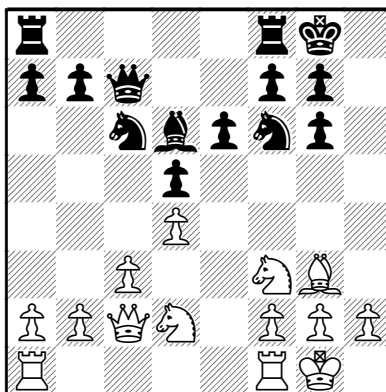
**1.e4 c6 2.d4 d5 3.exd5 cxd5 4.Bd3 Nc6 5.c3 Qc7 6.Bg5**

Rare. The most popular moves have been 6.Nge2, 6.h3, and 6.Nf3.

**6...Nf6 7.Nd2**

Going for the doubled pawns with 7.Bxf6 gxf6 gives Black the two Bishops and a strengthened center.

**7..Bg4 8.Qc2 e6 9.Ngf3 Bd6 10.0-0 Bh5 11.Bh4 Bg6 12.Bg3 0-0 13.Bxg6 hxg6**



What's the strategy, now that everybody is castled and the opening is over?

Considering the Jeremy Silman pawn pointing method, White's pawn chain is pointing towards the Black Kingside, indicating a Kingside strategic goal. White would like to use the e5 square, and take advantage of his greater space.

Black's pawn chain points towards the Queenside, indicating a Queenside strategy for Black. His minority attack would take the form of ...b5 and ...a5, followed by ...b4.

**14.Qd3**

White could not move his King's Knight, due to ...Nxd4. Now he can.

**14...Bxg3**

Black can start his minority attack right away with 14...b5 and the pawn cannot be taken and held due to 15.Qxb5 Rab8.

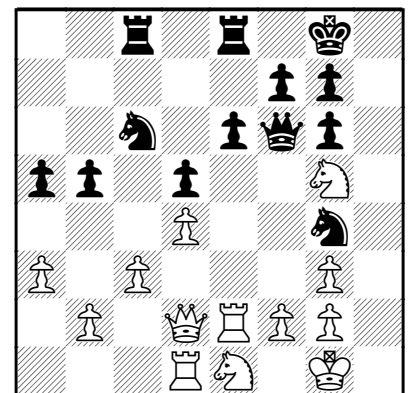
**15.hxg3 Rac8**

Black's minority attack can still be started with 15...b5.

**16.Rfe1 a6 17.Ng5 Rfe8**

Both sides have the same pawn formation in front of the King. Since there are no advantageous pawn breaks at the moment, and no Bishops, we see some serious Knight maneuvering.

**18.Ndf3 Ng4 19.Re2 Qd8 20.Qd2 Qf6 21.Rd1 b5 22.a3 a5 23.Ne1**



**23...Nh6**

Now the classic minority attack break is timely, for after 23...b4 24.axb4 axb4 25.cxb4, the b-pawns are weak enough, but Black also has 25...Nxd4! 26.Qxd4 Qxg5.

**24.Nd3 Nf5**

The break is possible here, too, with 24...b4 25.axb4 (also 25.Nc5 bxa3 26.bxa3 Qe7=) 25...axb4 26.Nxb4

Nxb4 27.cxb4 Nf5 28.Nf3=.

**25.Ne5**

White's Knight has taken three moves to get here from f3, but it has avoided losing a pawn on that square, since Black's Knight moved from g4.

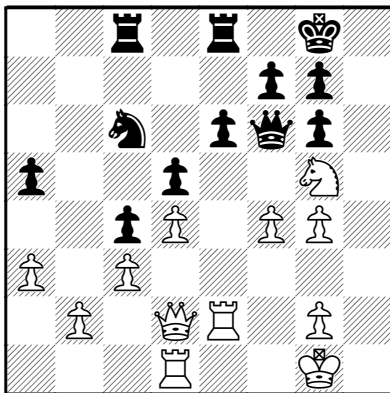
**25...Nd6**

Also possible is 25...Nxe5, with either 26.Rxe5 b4= or 26.dxe5 Qe7 27.g4 Nh6 28.f3 b4=.

**26.g4 Nc4?!**

Black gives up the minority attack and gives White a clear strategy.

**27.Nxc4 bxc4 28.f4**



Now, only White has a clear plan. Black has to be careful that the h-file does not become a route to his King.

**28...Qd8 29.Qe3**

Where is the safest spot for the King? Black's King can try to flee to the Queenside.

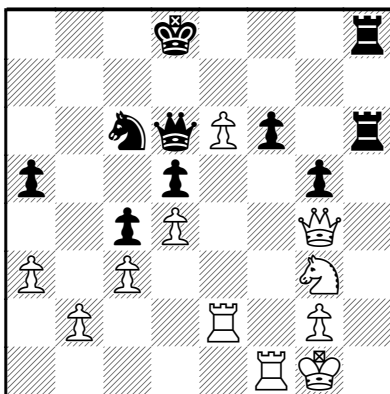
**29...Kf8 30.Qh3 Ke7 31.f5**

But Black can't leave the f7 pawn undefended.

**31...Rh8 32.Qf3 gxf5 33.gxf5**

And suddenly the e6 square can't be defended. It is looking like a rout.

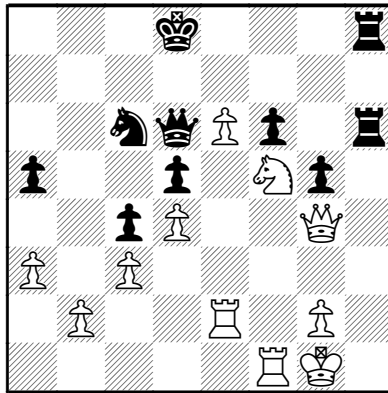
**33...Qd6 34.fxe6 f6 35.Nh3 Rh4 36.Rf1 Rd8 37.Nf4 Rh6 38.Qg4 g5 39.Nh5 Rdh8 40.Ng3 Kd8!**



Black's last move was the most testing, *more testing than I would have thought possible!*

The computer now likes 41.Rf3! Rh4 42.Qf5 R8h6 43.Qc2 Ne7 44.Qa4 Qc7 45.Ref2, and White has his advantages of pawn plus position.

**41.Nf5??**



But now, Black has a surprising techno-draw.

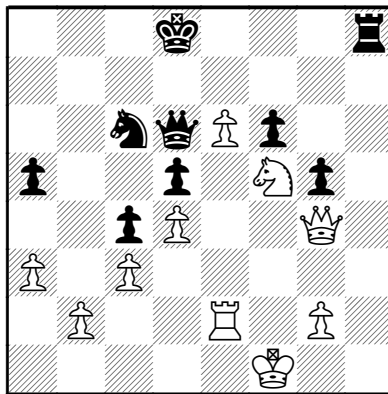
The computer sees the forcing 41...Qh2+ 42.Kf2 Rh4!! 43.Nxh4 (43. e7+ Nxe7 44.Nxh4 Rxh4 45.Qe6 is a transposition) 43...Rxh4 44.e7+ Nxe7 45.Qe6 Qf4+ 46.Ke1 Qc1+ with a draw by perpetual check.

So 41.Rf3! in the previous note had the purpose of preventing the perpetual check, yet preserving the win.

White's position was so good that it doesn't seem fair for the win to be so easy to slip away. Black's draw was hard to find, however.

Now Black goes for the wrong check:

**41...Rh1+? 42.Kf2 Rxf1+ 43.Kxf1**



White threatens e7+ in addition to taking Black's Queen. The only way out is to trade Queens into an

easy endgame win for White with 43...Qf4+.

**43...Rh1+ 44.Kf2 Qh2 45.e7+ Nxe7 46.Nxe7 Qg1+ 47.Kf3 Qf1+ 48.Kg3 f5 49.Nxf5 Kc7 50.Ne3 Qf7 51.Qxg5 Rh5 52.Qf4+ 1-0**

A well played effort by White; the error at move 41 is certainly understandable. ♖

**Solutions to Outside Shots!**  
From the back cover.

1. White could have cleared out the shooting gallery with 27.f7! to get a mate or at least bag some big game. See the notes to Morshedi - Lakdawala, page 15.
2. White's best way to force the issue is 22.Ne8! See Collins - Delgadillo on page 29 for the finish.
3. White ended it with 32.Qxc6! Enjoy the denouement in Xia - Lu on page 32.
4. Black terminates the contest swiftly with 54...g3+! 55.Kh3 g2+ 56.Kh2 Rh3+!! 0-1, in Yankovsky - Banawa, 4th Metropolitan FIDE Invitational.
5. Chop 'em and rock 'em! **36...Rxe3! 37.Qxe3 Bxd4 38.Qe2** (insufficient are 38.Qxd4 e3+ 39.Kg1 Qf2 mate, and 38.Rxd4 Qf1+ 39.Qg1 e3+ 40.Re4 Bxe4 mate) **38...Qf3+ 0-1** LeFevre,Howard - Shahin,George LPCC Tal Memorial La Palma (5), 29.04.2011  
Even better was 38...e3+! 39.Kg1 Qc6 40.Qc4+ Qxc4 41.bxc4 e2+ 42.Rxd4 e1/Q mate.  
Black resigned because of 39.Qxf3 exf3 40.h4 f2+ 41.Kh2 Bc3 42.Rf1 Be1-+.
6. Black wins material by rearranging the White pieces just a bit: **28...f5! 29.Nd2 Nc5! 0-1**  
Black must lose material in a somewhat unusual way. If, for example, 30.Ra7, then Nxd3 31.Qxd3 f4! -+. Steinfl - Yankovsky, 4th Metropolitan FIDE Invitational.

# Here and There

## Local News and Events Around the Southland

With "Here and There" in your subject line, please send your club or tournament news and notices to the editor at: RankAndFileEditor@gmail.com.



### Downtown Los Angeles

#### Metropolitan Chess

In June, Metropolitan Chess Inc will host another International Master norm event, June 15-19. Concurrently, a qualifier event will be held June 17-19.

In July, Metropolitan Chess Inc will host two International Master norm events, July 20-24 and July 27-31.

Qualifier events will be held July 8-10, July 22-24, and July 29-31.

These events will be held in Suite C998 at the California Market Center, 110 9th Street, Los Angeles, CA 90079.

There are several parking choices: Joe's Parking Structure on Broadway and Olympic (5-6\$ daily max), Joe's Parking Structure on Olympic and Main (10-12\$ daily max), underground California Market Center Parking (9-18\$ daily max), and street parking (free on Sundays)

If you are interested in earning an IM norm, or if you are at or near expert, or higher, and are looking to earn a FIDE rating, please e-mail [info@metrochessla.com](mailto:info@metrochessla.com) regarding these and other events.

#### Special Event: August Scholastic/Junior Camp

There will be a scholastic/junior camp held August 12-16, headed by none other than GM Michael Adams, GM Loek van Wely, and GM Melikset Khachiyan, and supported by several international master and FIDE master lecturers.

A nice video in regards to this camp can be found at:  
<http://vimeo.com/24286373>

#### 1st Metropolitan International GM/IM/WGM/WIM norm capable!

A 9 round swiss tournament

From August 17th to 21st, super-GM Mickey Adams, GM Loek van Wely, GM Ilya Smirin, GM Timur Gareev, GM Dejan Bojkov, GM Mark Paragua, GM Mesgen Amanov, GM Robert Ruck, GM Dmitry Gurevich and GM Melikset Khachiyan are currently slated to play.

It takes place at the luxurious *Sheraton Downtown Los Angeles* (711 South Hope Street, Los Angeles CA 90017).

The tournament will be officially open to players over the rating of 2200 FIDE, but exceptional juniors and local players U2200 FIDE may be allowed to play, pursuant to the approval of the tournament organizers.

The time control is 40/90 with SD/30 and 30 second increment beginning move 1.

The guaranteed prize fund is \$14,100, with an additional \$3,000 worth of Apple Products (iPads, iTouches, iPods, iShuffles) for best game prizes.

The 1st Metropolitan International currently has 25 foreign players, 10 grandmasters, and 36 titled players registered.

For more information, visit

[www.metrochessla.com](http://www.metrochessla.com).

For registration information, e-mail [ankit.gupta@metrochessla.com](mailto:ankit.gupta@metrochessla.com).



### Agoura Hills

#### Western Class Championships

March 11-13

GM Axel Bachmann of Paraguay won the 18th edition of Continental Chess Association's Western Class Championships with a 5½-½ score. Just behind him, in the Master section, were IM Jacek Stopa and WFM Tatev Abrahamyan at 4-1. See page 24 for Tatev's win over IM Enrico Sevilano. FM David Roper, with 3½-1½, took the Under 2300 prize.

In the Expert Section, Vanessa West scored a perfect 5-0. Takashi Kurosaki and Jacob Lopez tied for second at 4-1.

Udit Iyengar and Ruperto Dilig Jr. tied for first at 4½-½ in the Class A section, and Mark Keller won with 4½-½ in Class B. Alex Guillermo of Lancaster swept the Class C section with 5-0. Finally, Kevin Yao, Mick Peterson, Aaron Green, and Sloan Setiadikurnia all tied for first in the Class D section with 4-1.

Steve Immitt and Randall Hough directed for CCA. The Renaissance Agoura Hills Hotel hosted a turnout of 212 players.



### Irvine

#### SCCF Super State Scholastic Championships

March 18-20

The annual SCCF scholastic event had 357 players in twelve sections.

Vincent Huang and Kesav Viswanadha won grades 9-12, both scoring 5-1. The trophy went to Huang, since Viswanadha was not eligible.



Vincent Huang & grades 9-12 trophy

Michael Brown took the grades 6-8 section with 5½-½.

Huang and Brown, respectively, will represent Southern California at the Denker Tournament of High School State Champions and the Barber Tournament of Junior High School State Champions, both held in conjunction with the US Open in Orlando, Florida.

David Minasyan at 5½-½ won the grades 4-6 section, Hovanes Salvaryan and Danial Asaria scored 5-1 to take the grades 2-3 section, and Ajay Krishnan finished first in the K-1 section, with a perfect 5-0.

In the three reserve sections, the winners were Justin Yang and Kaine Garcia at 4½-½ in grades 7-12, Brandon Eng and David Cera were perfect at 5-0 in grades 4-6, which at 64 players was by far the largest section, and James Tam swept the grades 2-3 reserve section with a perfect 5-0.

There were also three blitz sections. Michael Brown swept grades 7-12 with 8-0, as did Craig Hilby in grades 4-6. In the K-3 Blitz section, Bryce Wong won it with 7½ of 8.

Randall Hough, assisted by Salman Azhar, led the hard working team of Anthony Ong, Michael Belcher, Dr. Robert Minoofar, Takashi Iwamoto, Aamir Ali Azhar, and Yousef Rezwan Azhar in directing the tournament.



Michael Brown won grades 6-8



## Murrieta

### Central Park Chess Club

We are a young club, started about 18 months ago, and are located at:

38884 Cherry Point Lane

Murrieta, California 92563

Contact: Mihai Harabor, President

Phone: 951-461-7578

e-mail: m.harabor@ca.rr.com

web: www.murrietachessclub.com

We meet every **Tuesday** from 6:00 PM to 9:00 PM. You are always welcome; just show up and see what we are all about!

If you would like to play in our tournaments, we have Quads and Swisses, or if you just like to play chess you can always find casual games!

Some of our upcoming tournaments:

Swiss 006: June 7, 14, 21, and 28.

Swiss 007: July 5, 12, and 19.

Quads: August 9, 16, and 23.

Swiss 008: Sep. 6, 13, and 20.

October/November: Our 2nd MCPCC Club Championship - Round Robin (Dates to be announced)

Give us a call or check us out on the web-site !!

## San Diego

### San Diego Chess Club

February 23-April 6

The 7 week **Club Championships** wrapped up on April 6th with Raoul Crisologo, John Funderburg and Bruce Baker claiming the Co-Champion title with 5 points each, but Raoul won the coveted trophy on tie-breaks.

Todd Smith was ½ point behind, as were BU2000 winners Ignacio Sainz and Peter Hodges.

In the Reserve Championship, newcomer Santi Pinon put on a very strong showing, winning the trophy with 5½ points, ahead of Bruce Char-nov and Edgar Lopez with 5, and Jim Krooskos and Ron Rezendes with 4½.

The Women's Championship saw an even stronger performance from Eliza Eggert, who won all 6 of her games. Rocio Murra was 2nd with 4, and Mayra Murra and Stefanie Burnham were 3rd with 3.

The non-qualifiers for the Championships played in the David Delgadillo Open and Fred Borges Reserve. In the Delgadillo, Manuel Herrera scored 5½ for 1st, Jeff Turner and Paul Agron tied for 2nd, and Buddy Morris, Tim McGuinness and Fawsi Murra Jr. tied for BU2000. In the Borges, Kirk Branner scored an impressive 6½ and Anthony Harbone was hot on his heels with 6. Darren Himeles was BU1600; Glenn Rich and Tygan Zeng BU1400, all with 4½ points.

In all, 90 players fought for cash prizes and those elusive and beautiful trophies.

- Chuck Ensey

### The SCCF Senior/Junior Open

April 9-10

42 players were evenly split between 21 "seniors" – players 50 years or older, and 21 "juniors" – players under 50 years old in this annual event held in San Diego for the last five years or so.

This year we used a time control of G/100 with 10 second delay for all 5 games.

The Senior Section was won by Bruce Baker with 4½ out of 5; he agreed to a last round draw with runner up Alejandrino Baluran, who scored 4 points.

Romeo Ignacio was Best U2300, Rick Aeria Best U2100, Leonard Sussman Best over 60 years old and Avram Zaydenberg Best over 70 years old, all with 3½. Daniel Collins was Best U1900 and Anthony Harbone was Best U1700, both with 2½. Steven Dahl was Best U1500 with 2. Anthony Harbone would have won the Best over 80, but the rating class prize was bigger.

In the Junior Section, Enrico Se-villano took 1st place with 4½, and John Bryant was 2nd with 4.

And no, Enrico did not draw with John, he had to beat John in the 4th round after getting nicked for a draw by the young Varun Krishnan in round 3.

Varun tied for Best U2300/3rd place with Craig Clawitter with 3½. Kyron Griffith was Best under 20 years old, Venkat Iyer was Best U 16 years, both with 3 points.

Madhavan Vajapeyam tied for Best U2100 with Alan Tsoi, also with 3 and Peter Hodges was 2nd U2300 with 3.

Best U1900 went to Sridhar Ra-manujam, also with 3. Seven year old Ajay Krishnan won Best U1700 with 2½, and 10 year old Zechariah Zhu won Best U1500 with 2.

Andrew Negus won Best U 12 years old with 1½ after Ajay and Zech won the bigger rating prizes.

Because attendance was down from the last 3 years, when we pulled in over 50 players, it seemed just about everyone won some kind of prize, there being 16 prizes in each section.

But even those who didn't win anything, like myself, had a great time because this is such a unique event.

Next year I hope to hit our mark of 70 players with a little more publicity and promotion; we relied almost exclusively on the internet and emails this year, and the lack of ads and the usual flyers may have hurt a bit.

One game from each section follows.

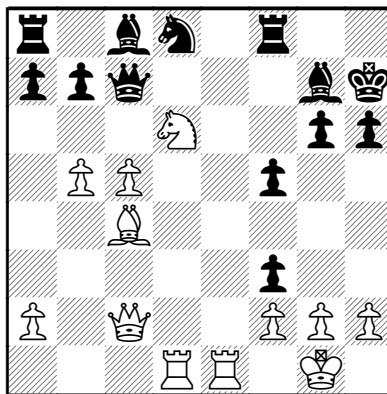
- Chuck Ensey

**Collins, Daniel (1862) - Delgadillo, David (1870)**  
**[A46] Queen's Pawn Game**  
**SCCF Senior/Junior Open**  
**Senior Section**  
**San Diego, 04.2011**

Notes by the editor.

**1.d4 Nf6 2.Nf3 c5 3.e3 g6 4.Bd3 Bg7 5.0-0 cxd4 [5...0-0 6.b3] 6.exd4 0-0 7.Re1 Nc6 8.c3 d6 9.Nbd2 Nd7 10.Ne4 h6 11.Bf4 Kh7 12.Qc2 e5 13.dxe5 Ndx5 14.Bxe5 dxe5 15.Rad1 Qa5 16.b4 Qb6 17.b5 Nd8 18.c4 f5 19.c5 Qc7 20.Nd6 e4 21.Bc4 exf3**

Black stays in the game with 21... Be6! 22.Nd4 Qxc5 23.Nxe6 Nxe6 24.Qc1=.



**22.Ne8!**

Now if Black tries to avoid taking the Knight, there is 22...Qf4 23.g3 Qg5 24.h4 Qg4 25.Nxg7 Qh3 26.Bf1 Qg4 27.Re7+.

**22...Rxe8 23.Rxe8 Bd7**

Or: 23...Bf6 24.c6! and now:

a) 24...bxc6 25.Bg8+ Kh8 (or 25...Kg7 26.Qc5!+-) 26.Qc4+-.

b) 24...h5 25.cxb7 Qxb7 26.Bd5+-.

c) 24...f4 25.Bg8+ Kg7 26.Qc5+-.

**24.Re7! 1-0**

**Clawitter, Craig (2219) - Iyer, Venkat (1965)**  
**[B10] Caro-Kann Defense**  
**SCCF Senior/Junior Open**  
**Junior Section**  
**San Diego, 04.2011**

Notes by the editor.

**1.c4 c6 2.e4 d5 3.cxd5 cxd5**

**4.exd5 Nf6 5.Nc3 Nxd5 6.Bc4 Nxc3**

A better try for equality is 6...Nb6 7.Bb5+ Bd7.

**7.bxc3 e6 8.Nf3 Bd6 9.d4 Qc7 10.Qd3 0-0 11.0-0 h6 12.Bb3 b6 13.Bc2 f5**

This unfortunate weakening of the Kingside is due to Black's 11th move, which makes ...g6 impossible here.

**14.Re1 Re8 15.Bb3**

Now White threatens Qxf5, making use of the new pin.

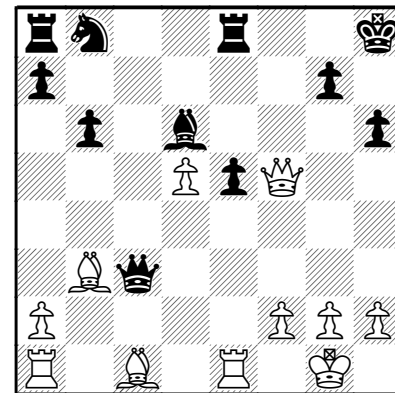
**15...Kh8 16.Nh4 Bd7 17.d5 e5 18.Nxf5 Bxf5**

Better looking at first is 18...e4 19.Rxe4 Rxe4 20.Qxe4 Bxf5 21.Qxf5 Qxc3, but White can win with 22.Bb2!! Qxb2 23.Qc8+ Kh7 24.Re1+-.

**19.Qxf5**

Now Black lasts longer by continuing development with 19...Nd7 20.Qh3 Nf6, but White keeps his big advantage with 21.Ba4 Rf8 22.Bc6 Rad8 23.Be3.

**19...Qxc3**



**20.Bxh6! gxh6 21.Qf6+ Kh7**

If 21...Kg8, then 22.Qg6+ Kf8 23.Qxd6+.

**22.Qf7+ Kh8 23.Qxe8+ 1-0**

**Gambito Opens**

The March, April and May Super Gambito Opens were all won by Cyrus Lakdawala, dominating over an average of 30 players in each event.

U2400 prizes were won by Ali Morshedi, Varun Krishnan, Peter Graves and Kyron Griffith, while Best Under 2200 prizes were won by Raoul Crisologo, Aaron Wooten and Leonard Sussman.

U2000 prize winners included Jamieson Pryor, Madhavan Vajapeyam and Venkat Iyer; U1800: Kevin Ren, Scott Householder and Jerry Qu; U1600: Sam Barboo, Isaac Vega, Ben Keltner, Haziq Siddiqi and Alexander Blank.

See the SDCC website for more details on the *Super Gambito Opens* on the 1st Saturday of every month with \$700 in Guaranteed Prizes and the *regular Gambito Opens* on the rest of the Saturdays.

- Chuck Ensey



## San Luis Obispo

### San Luis Obispo Spring Open

Results are in for the 2011 San Luis Obispo Spring Open held Saturday, April 30th!

The event was held at the Masonic Lodge in downtown San Luis Obispo. Except for the occasional door alarm going off it turned out to be a nice location.

Thanks again to all the organizers and people that helped with the set up and clean up.

There were a number of upsets and tense finishes.

The Open section saw a tie for first place between Craig Faber of Yorba Linda and SLO Club member Taylor McCreary with 3.5 point each.

Miss Taylor McCreary is from San Luis Obispo and is an 8th grader at Laguna Middle School.

Both players now qualify as candidates for the Southern California State Championship tournament this summer.

Kyle Reib of Santa Barbara and George Miller followed with 3 points each and SLO Club Member Solomon Ruddell rounded out the top finishers with 2.5 points.

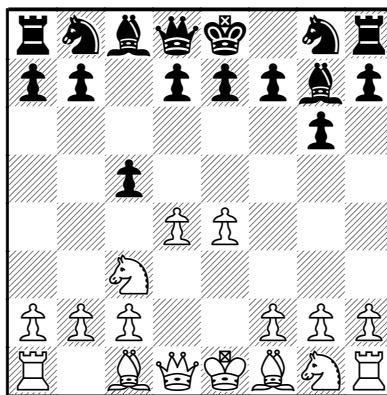
The under 1700 prize was shared between locals Mark Donovan and Robert Vandenouden along with Bradley Rush and Thomas Griffin.

The Reserve section had first-tim-

er James Wilson in clear first with a perfect score of 4.0. Four players shared the next highest score of 2.5 including Fred Brown, Howard Gaxiola, Isaac Ruddell, and first-timer Jared Levenson.

Full results can be seen at <http://www.slochess.com/upcoming-events/2011springopenresults>.

**Rieb, Kyle C (2096) - McCreary, Taylor (1768)**  
**[A43] Modern Defense**  
**SLO Spring Open (2)**  
**San Luis Obispo, 30.04.2011**  
 Notes by Taylor McCreary  
**1.e4 g6 2.d4 Bg7 3.Nc3 c5**



This is what I usually play.

In the first round, my opponent also played Nc3 and I got into some trouble after he played 4.Be3.

**4.d5**

So I was a little bit relieved to see this move because I didn't want a repeat of my first game, 4.Be3 Qb6 5.Nd5 Qa5+ 6.c3.

**4...d6 5.Bb5+ Bd7 6.Bxd7+ Nxd7 7.Nge2 Ngf6 8.0-0 0-0**

We were both just playing normal moves.

**9.Ng3 a6 10.a4 Qc7 11.f4**

I expected that, but I wasn't really worried since he isn't really threatening much yet.

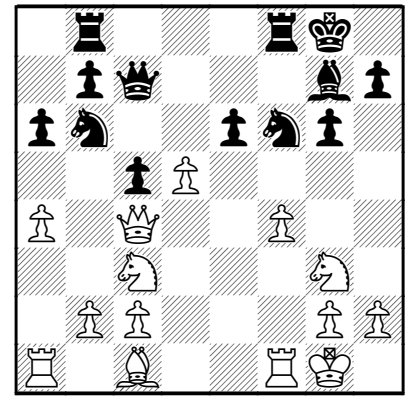
**11...Rab8 12.Qe2**

His pawns in the center were kind of bugging me, so I played:

**12...e6 13.dxe6 fxe6 14.Qc4**

At first I was worried when I saw this move, but then I analyzed it more carefully and saw that I had an in between move.

**14...d5 15.exd5 Nb6!**



I don't think he saw this, and it surprised him enough to hurt his play.

**16.Qe2 exd5 17.Qe6+**

His first mistake.

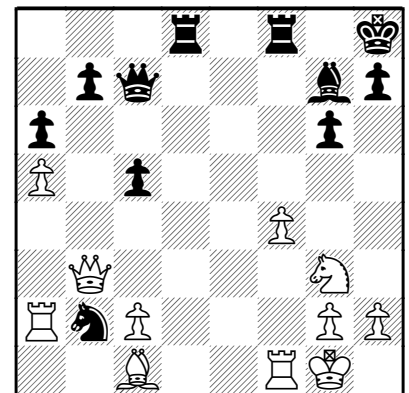
He could have played 17.a5 Nbd7 (if 17...Nc4 18.Nxd5 Nxd5 19.Qxc4) 18.Qe6+ Kh8 19.Nxd5 Nxd5 20.Qxd5 and won a pawn.

I would have been much worse here.

**17...Kh8 18.a5 Nc4 19.Nxd5 Nxd5 20.Qxd5 Nxb2**

Now we're even again, but I'm more developed and the vulnerability of his Queen gives me the chance to develop my Rook.

**21.Ra2 Rbd8 22.Qb3**



**22...Nd1**

I had to see this when I played 20...Nxb2 to ensure that my knight wasn't trapped.

The alternative 22...c4 23.Qf3 c3 would also have been cool, but I didn't see it!

**23.c4 Nc3 24.Rc2**

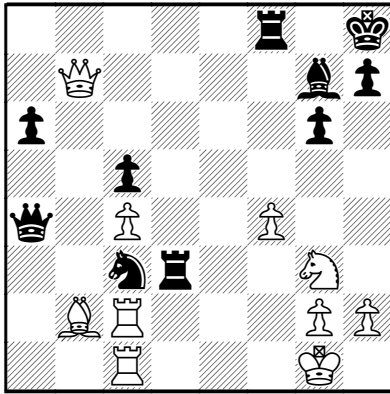
This is another mistake. His Rook is more active than it would have been, but he has to give up a pawn. Better was 24.Ra3.

**24...Qxa5 25.Bb2 Rd3**

Or 25...Bd4+ 26.Kh1 Na4 27.Bxd4+ cxd4 28.Qxb7 Nc5 29.Qb2 Kg8 30.Re2.

The computer likes this position, but I liked my Bishop and I think it would have been hard for me to play this.

**26.Qxb7 Qa4 27.Rfc1??**



A blunder in time pressure, but I was already better.

**27...Bd4+ 28.Kh1 Qxc2 29.Re1 Rd1 30.Qe7 0-1 Time**

He ran out of time, but he's already lost.



**Santa Monica**

**Santa Monica Bay Chess Club**

**GM SIMUL:**

On May 2nd, GM Varuzhan Akobian played a 9-board simultaneous exhibition against the Club.

For the first time in the many years that this highest rated California player has been performing simul at SMBCC, he did *not* achieve a perfect score. In a game ending with a repetition that drew praise from the grandmaster, club veteran Simon Kogan (1931) split the point with the nation's #5 chess competitor.

Simon won a free tournament entry in the following event per the conditions of the Simul.

**Akobian,Varuzhan -**

**Kogan,Simon**

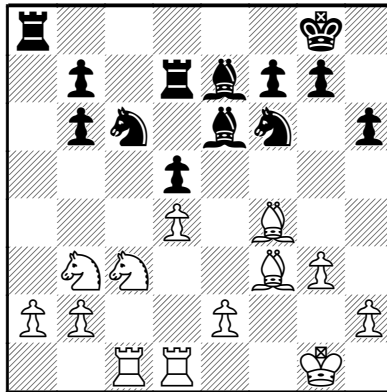
**[A53] English Opening**

**Santa Monica Bay Chess Club**

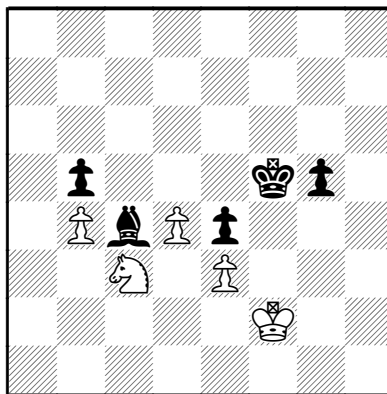
**2011 Simul**

**Santa Monica, 02.05.2011**

1.c4 e5 2.Nc3 Nf6 3.g3 Be7 4.Bg2 c6 5.d4 d6 6.Nf3 e4 7.Nd2 d5 8.0-0 9.Qb3 Qb6 10.Qxb6 axb6 11.cxd5 cxd5 12.f3 exf3 13.Bxf3 Be6 14.Nb3 Nc6 15.Bg5 Rfd8 16.Rfd1 h6 17.Bf4 Rd7 18.Rac1



18...Bd6 19.Bxd6 Rxd6 20.a3 Na5 21.Nxa5 bxa5 22.Nb5 Rc6 23.Kf2 Rac8 24.Rxc6 Rxc6 25.Nc3 Kf8 26.Ke1 Ke7 27.Kd2 Rc4 28.e3 Kd6 29.Rc1 Kd7 30.Be2 Rc8 31.Bd3 Ke7 32.Ne2 Rxc1 33.Nxc1 Ne4+ 34.Bxe4 dxe4 35.Ne2 g5 36.Nc3 f5 37.b4 axb4 38.axb4 Bc4 39.Ke1 Kd6 40.Kf2 Bd3 41.h4 b5 42.hxg5 hxg5 43.Kg2 Ke6 44.Kf2 Bc4 45.g4 Kf6 46.gxf5 Kxf5



47.Kg3 Bf1 48.Kf2 Bc4 1/2-1/2

**"C-NOTE" SWISS: JUNE 6-27, 2011**

Santa Monica Bay Chess club will hold a 4 round Swiss Tournament on Monday evenings from June 6 to June 27. Rounds begin at 7:10 p.m. continu-

ing no later than 11:00 p.m. Registration begins 7:00 p.m. on June 6.

Entry fee is \$10 with Club membership (\$60 per year). Time controls are G/1:55. The event is USCF rated. Cash prizes will be awarded on "open" and "class-based" basis.

Additionally, this event will offer a \$100 bonus to the player who wins clear 1st Place without losses or draws!

The Santa Monica Bay Chess Club is located in the St. Andrew's Church Library at 11555 National Blvd. West Los Angeles at corner of Federal/Barry Ave. at National Blvd. Contact: TD Pete Savino (310) 827-2789.



**Pasadena**

**Pasadena Club Championship YOUTH TRIUMPHS**

The Pasadena Club's annual championship, named in honor of Frank Ottolino, an enthusiastic volunteer who passed away recently, was won by 13-year-old Yusheng Xia.



*Yusheng Xia: Club Champion*

His 5½-½ score may well make him the youngest champion ever. Yusheng started out 5-0 and then drew easily with Robert Xue to clinch the honor. Veterans Mike Carlson and Jesse Victoria and ten-year-old Albert Lu tied for second, a half-point behind.

Class winners in the 67-player tournament included Asatur Dovlatyan, Christopher Hung, and Rolando Tenoso (Under 1800); Robert Head, Larry Hu, Kevin Qian, Justin Tay, and John Yu (Under 1600); Rob Minoofar (Under 1400); Shaileja Jain (Under 1200); and Manika Saoji (unrated).

The Pasadena Club meets Friday evenings (holiday weekends excluded) at the Boys and Girls Club, 3230 East Del Mar.

The Mount Wilson Open, a four round swiss in two sections, will be held June 3 – 24.

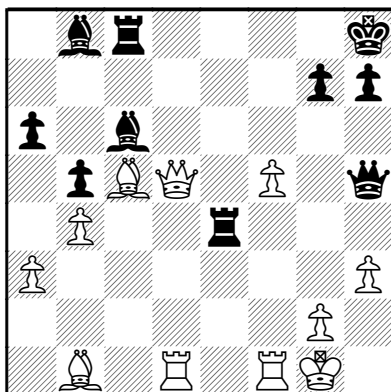
For further information, contact Randy Hough, randallhough@yahoo.com or (626) 282-7412.

- Randy Hough

**Xia, Yusheng - Lu, Albert**  
**[C06] French Defense,**  
**Tarrasch Variation**

**Pasadena Club Championship (5)**  
**Pasadena, 25.03.2011**

1.e4 e6 2.d4 d5 3.Nd2 Nf6 4.e5 Nfd7  
 5.Bd3 c5 6.c3 Nc6 7.Ne2 Qb6 8.Nf3  
 cxd4 9.cxd4 f6 10.exf6 Nxf6 11.0-0  
 Bd6 12.Nc3 0-0 13.a3 Bd7 14.Be3  
 a6 15.b4 Rae8 16.Rc1 Qd8 17.Bg5 b5  
 18.Bb1 Qe7 19.Qd3 Qf7 20.Rce1 Qh5  
 21.h3 Kh8 22.Bc1 e5 23.dxe5 Nxe5  
 24.Nxe5 Bxe5 25.f4 Bb8 26.Be3 Re6  
 27.f5 Re5 28.Rd1 Ne4 29.Nxe4 Rxe4  
 30.Bc5 Rc8 31.Qxd5 Bc6



32.Qxc6! Rxc6 33.Bxe4 Rc8 34.Rd7  
 Qg5?? 35.Bd4! Rc4 36.Bxg7+ Qxg7  
 37.Rd8+ 1-0



**Beverly Hills**

**Beverly Hills Chess Club**

Beverly Hills Chess Club offers chess instruction five days a week for adults and children, USCF rated Open tournaments, Scholastic tournaments, private instructions and more. Located in the city of Beverly Hills, 8950 W. Olympic Blvd., Suite 210. (310) 274-7873.

BHCC will be starting a tournament (6/21, 6/28, 7/5, 7/19, 7/26) No rounds on 7/12. 5-SS, G/90. One game per night starting at 7pm. 75% of EF returned as cash prizes. Please visit our website for information & registration.

**July 10**

Beverly Hills Scholastic Tournament 5-SS, G/30. Players should bring clocks. Prizes: Trophies to the top 3, and medals to the next 3. Registration: 12:30 – 12:45 Starts: 1 pm EF: \$15 if received two days in advance, \$20 onsite (Site Entries Cash), SCCF members \$3 off.

Online Reg: www.bhchessclub.com. Phone Reg: 310-274-7873 (Visa/Master Card only). Mail Reg: Mail checks to Beverly Hills Chess Club. Email: bhchessclub@hotmail.com

BHCC is offering a 9am – 5pm **Summer Camp from July 18 – July 29th for children ages 5 – 15.** Campers will experience 3 hours of chess instructions/play on a daily basis in addition to 2½ hrs of karate & optional cartooning & keyboarding class. For registration please visit our website at www.bhchessclub.com.

**Beverly Hills Chess Club**

I recently challenged the kids in my chess class to see if they could come up with a chess game where one side would be stalemated, but with

all the original pieces still remaining on the board.

The main difficulty of this task was that the position had to be one which could legally arise, and they had to show me the moves from start to finish.

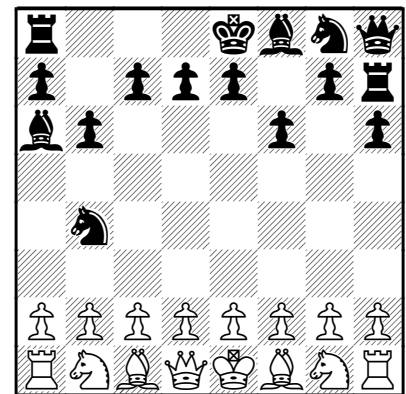
This challenge was no easy task! It took them a while, but they got it and I was very proud of them. Credit goes to Eli and Ethan Minoofar.

The “game” is below. At the end, black is stalemated, but all the original pieces are present.

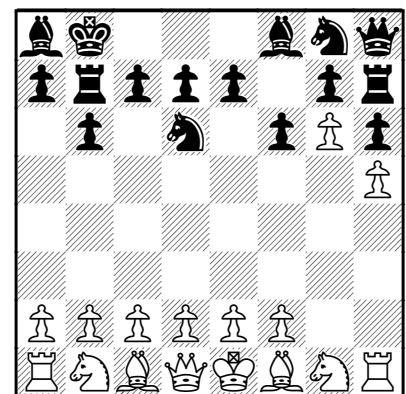
- Joseph Roth

**Stalemate Challenge**

1.Nf3 h6 2.Ng1 b6 3.Nf3 Ba6 4.Ng1 Nc6 5.Nf3 Nb4 6.Ng1 Qb8 7.Nf3 Qb7 8.Ng1 Qc6 9.Nf3 Qg6 10.Ng1 Nf6 11.Nf3 Qh7 12.Ng1 Qg8 13.Nf3 Rh7 14.Ng1 Qh8 15.Nf3 Ng8 16.Ng1 f6



17.Nf3 Rb8 18.Ng1 Bb7 19.Nf3 Ba8 20.Ng1 Rb7 21.Nf3 Kd8 22.Ng1 Kc8 23.Nf3 Kb8 24.Ng1 Nc6 25.Nf3 Ne5 26.Ng1 Nc4 27.Nf3 Nd6 28.Ng1 Nc8 29.h4 Nd6 30.h5 Nc8 31.g4 Nd6 32.g5 Nc8 33.g6 Nd6



Please turn to page 36, **Here and There.**

# Where to Play Chess



**ARCADIA:** The Arcadia Chess Club meets at 6:30 p.m. Mondays in the Senior Citizens building, 405 S. Santa Anita Ave.

Continuous rated tournaments, casual play. Dues: \$10/year. Call Mel Clark at (626) 447-9355.

Website:

[www.ArcadiaChessClub.com](http://www.ArcadiaChessClub.com).

**BAKERSFIELD:** The Bakersfield Chess Club meets 6:00 p.m. to 9:00 p.m. Thursdays in the Golden State Mall, 3201 F. St. Rated tournaments, rated games, casual play, blitz, lessons. Dues: \$35/year for adults, \$25/year for youth. Call Kenneth J. Poole at (661) 304-7468.

Website:

[www.bakersfieldchessclub.com](http://www.bakersfieldchessclub.com).

**BEVERLY HILLS:** The Beverly Hills Chess Club meets in Suite 210 of 8950 Olympic Blvd. All levels of players welcome. Monthly open, member-only, and scholastic tournaments. Classes on Tuesdays, Wednesdays, Thursdays, Saturdays and Sundays, private lessons, camps, social events, blitz, simuls and many other events. Membership: \$125/month, \$1,200/year, one-time registration fee of \$50 (waived for SCCF members).

Call Isabelle Minoofar at (310) 274-7873 or write to [bhchessclub@hotmail.com](mailto:bhchessclub@hotmail.com).

Website: [www.bhchessclub.com](http://www.bhchessclub.com).

**BURBANK:** A group meets Wednesdays from 1:00 p.m. to 4:00 p.m. at the Joslyn Center, 1301 W. Olive St. (at Griffith Park Drive).

Casual play, ages 55 and up only. No dues.

Call (818) 238-5353.

**BURBANK:** A group meets Fridays from 5:15 p.m. to 9:30 p.m. in McCambridge Park, 1515 N. Glenoaks Blvd. Casual play, tournaments possible.

Call Emil Klimach at (818) 845-1104.

**CARLSBAD:** A group meets 1:00 p.m. to 4:00 p.m. Mondays in the Carlsbad Senior Center, 799 Pine Ave. Casual play. Most attendees are over age 50, but younger adults are welcome. No dues. Call (760) 602-4650.

**COLTON:** A group meets at 9:00 p.m. Friday nights in a private room at Denny's restaurant, 160 W. Valley Blvd. Casual play, blitz. Call Denny's at (909) 824-2132.

**ESCONDIDO:** The Escondido Chess Club meets at 7 p.m. Thursdays at 2427 S. Centre City Parkway. Continuous rated adult and children's tournaments. Dues: \$20/year. Call the club at (760) 317-1744 or Alex Goddard at (760) 500-3417 or write to [admin@escochess.com](mailto:admin@escochess.com).

Website: [www.escondidochess.com](http://www.escondidochess.com).

**ESCONDIDO:** A group meets noon to 4 p.m. weekdays in the Joslyn Senior Center, 210 Park Ave. Casual play, ages 50 and up. No dues.

Call (760) 839-4688.

**FRESNO:** The Fresno Chess Club meets 6:00 p.m. to midnight Mondays and Fridays in Carl's Jr. restaurant, 6767 N. First St. (at Herndon). Rated tournaments, non-rated quick chess quads, casual play, lectures, chess library, newsletter, new website. More than 200 members!

Dues: \$20/year, \$10/year for students, women, and those who live outside Fresno County. Contact Bob Rasmussen at (559) 708-8100.

Website: [www.fresnochessclub.org](http://www.fresnochessclub.org).

**GARDEN GROVE:** Chess Palace is open 12:00 p.m. to 7:00 p.m. Wednesdays and Fridays, and 9:00 am to 8:00 p.m. Saturdays and Sundays, at 5246 Lampson Ave. Closed Mondays, Tuesdays, and Thursdays.

Wide variety of rated tournaments, Action chess, youth tournaments, scholastic chess camps, blitz, occasional lectures and simuls, large selection of chess books, computers, and equipment for sale, lending library of chess videos, excellent website.

Dues: \$3/day or \$25/month.

Call the club at (714) 899-3421 or Alfred Ong at (310) 594-3475.

Website: [www.chesspalace.com](http://www.chesspalace.com).

**GLENDALE:** The chess park at 227 N. Brand Blvd. is open day and night for casual play. Speed tournaments, occasional weekend tournaments.

**HEMET:** The Hemet Chess Club meets 2:30 p.m. to 9:00 p.m. Sundays in Steve's Burgers West, 240 S. Sanderson Ave. Rated tournaments, casual play. Free. Call Marcos Montes at (951) 252-5926 or write to hemetchessclub2009@gmail.com. Website: www.hemetchessclub.blogspot.com.

**HUNTINGTON BEACH:** The Hanley Chess Academy Chess Club meets 7:00 p.m. to 11:30 p.m. Fridays at 7390 Center Ave. Weekly rated tournaments at 7:30 p.m., Action chess, blitz tournaments, casual play. No dues. Bring your own equipment. Contact Joe Hanley at (714) 925-3195 or refchess@gmail.com. Website: www.hanleychessacademy.org.

**IRVINE:** A group meets at lunch time (11:45 a.m. to 1:00 p.m.) Fridays at Knowlwood Restaurant, 14952 Sand Canyon Ave. Speed chess, analysis. Bring equipment. Contact David Zechiel at david@zechiel.com.

**IRVINE:** A group meets 11 a.m. to 1 p.m. Fridays at the Rancho Senior Center, 3 Ethel Coplen Way. Casual play, mostly seniors. Free. Call (949) 724-6800.

**JOSHUA TREE:** The Joshua Tree Chess Club meets 6:00 p.m. to 10 p.m. Fridays at Faith Lutheran Church, 6336 Hallee Rd. in Joshua Tree. Casual play, occasional tournaments, some instruction, junior chess program. Contact Mark Muller at (760) 367-2311 or at muller29@roadrunner.com

**LA PALMA:** The La Palma Chess Club meets 6:00 p.m. to 11:00 p.m. Fridays in Central Park, 7821 Walker St. Continuous rated tournaments, blitz, casual play, free coffee, boards and sets provided. Entry fees: \$45 for

three months of rated tournament play or \$25 per tournament, \$5 less to La Palma residents. Contact Leigh Hunt at (714) 635-0448 or wlhunt@earthlink.net or Barry Lazarus at (714) 350-9465 or barryjlazarus@hotmail.com. Website: www.lapalmachess.com.

**LAGUNA BEACH:** People gather to play chess at the permanent chess table on the boardwalk.

**LAGUNA HILLS:** A group meets 5:00 p.m. to 9:00 p.m. Wednesdays in the Game Master, Suite 1530 of the Laguna Hills Mall. Casual play. Free. Call (949) 457-0290. Website: www.gamecenteronline.com.

**LAGUNA WOODS:** The Leisure World Chess Club meets 1:00 p.m. to 5:00 p.m. Mondays and 1:00 a.m. to 6:00 p.m. Thursdays in the Community Center building in Leisure World. Guests are welcome. Casual play, ladder competition, occasional simul. Call John Griffin at (949) 462-0722 or Stan Kahan at (949) 830-6699.

**LANCASTER:** Checkmate Chess Club meets 3:30 p.m. to 5:00 p.m. Thursdays in the public library, 601 W. Lancaster Blvd. Casual play, instruction. All ages and all levels welcome. Chess sets provided. Call the library at (661) 948-5029 or write to daa@mahowald.org.

**LANCASTER:** The Antelope Valley will host a U.S. Veterans' Chess Club from October 20, 2011 to April 12, 2012, Thursdays, 6:30-8pm at the William J. "Pete" Knight Veteran's Home of California, 45221 30th St. W., Lancaster CA 93556. Free, but registration required at site. Bring DD214 or other proof of veteran status. (Active Duty Personnel also welcome.) Contact: Mark.Chapa@va.gov or daa@mahowald.org.

**LANCASTER:** A chess club designed specifically for mentally disabled adults runs Wednesdays, 4 - 5:30pm,

at the Lancaster Moose Lodge (44545 Division St., Lancaster). For full details: daa@mahowald.org

**LAWNDALE:** The Alondra Park Chess Club meets 6:30 p.m. to 10:00 p.m. Tuesdays at 3850 Manhattan Beach Blvd. Rated six-round tournaments at 7:00 p.m., speed chess or extra rated games on seventh Tuesday, no smoking. Dues: \$5/year plus \$5/tournament, \$2.50/year for juniors. Call Richard Meller at (310) 227-2873. Website: www.alondraparkchessclub.com

**LONG BEACH:** The chess room in Bixby Park, 130 Cherry Ave., is open for casual play from noon to 5:30 p.m. Mondays through Fridays and noon to 4:00 p.m. Saturdays. Free.

**LONG BEACH:** Players gather for casual play at Golden Burger, 2301 E. 4th St., after the chess room in Bixby Park closes. Call the restaurant at (562) 434-2625.

**LOS ANGELES:** A group meets at 5:30 p.m. Mondays in the Baldwin Hills branch of the public library, 2906 S. La Brea Ave. Casual play, instruction for beginners. All ages welcome, especially children and teenagers. Call the library at (323) 733-1196.

**LOS ANGELES:** A group meets from 1:00 p.m. to 2:00 p.m. Saturdays in the Cahuenga branch of the public library, 4591 Santa Monica Blvd. Casual play. Free. Call the library at (323) 664-6418.

**LOS ANGELES:** The Los Angeles Chess Club (LACC) meets on the second floor of 11514 Santa Monica Blvd., above Javan restaurant. Variety of tournaments and instruction for children and adults on Saturdays, Sundays and Tuesday evenings. Dues: adults \$120/year, juniors/seniors \$100/year or \$5/visit for non-members, first visit free. Call Mick Bighamian at (310) 795-5710 or send a message to Mick@LaChessClub.com. Website: www.lachessclub.com.

LOS ANGELES: Metropolitan Chess, Inc. meets in the California Market Center, 110 E. Ninth St.

Monthly invitational events for masters, variety of side events and amateur tournaments planned (quick chess, blitz, scholastic events, simultaneous exhibitions, instruction, lectures, scholastic camps), special benefits for club members.

Dues: \$100/year, \$60/year for students and seniors.

Contact Ankit Gupta at [ankit.gupta@metrochessla.com](mailto:ankit.gupta@metrochessla.com) or

Michael Belcher at

[michael.belcher@metrochessla.com](mailto:michael.belcher@metrochessla.com).

Website: [www.metrochessla.com](http://www.metrochessla.com)

LOS ANGELES: The Santa Monica Bay Chess Club meets 7:00 p.m. to 11:00 p.m. Mondays in St. Andrew's Lutheran Church, 11555 National Blvd.

Variety of rated tournaments, casual play, simuls, over 50 years in business. Dues: \$60/year, free to women and juniors.

Call Pete Savino at (310) 827-2789. Website:

[SantaMonicaBayChessClub.sports.officelive.com](http://SantaMonicaBayChessClub.sports.officelive.com)

LOS ANGELES: Starbuck's, 5301 W. Centinela Blvd., welcomes chessplayers for casual play, speed chess, bughouse and occasional serious events. Daily until 10 p.m.

Call (310) 338-1297.

LOS ANGELES: Tang's Donuts, 4341 W. Sunset Blvd., welcomes chessplayers for casual play and speed chess, especially late at night.

MORRO BAY: A group meets 10 a.m. to 4 p.m. Saturdays at the big chess board on Embarcadero at Morro Bay Blvd. Chess pieces may be checked out weekdays from the Parks and Recreation Dept. Call Eugene Arcamonte at (805) 528-4079 or Fred Brown at (805) 772-7074.

MURRIETA: The Murrieta Central Park Chess Club meets 6:00 p.m. to 9:00 p.m. Tuesdays at 38884 Cherry Point Lane. Rated and non-rated

tournaments, instruction for children and adults, chess library, casual play on most Wednesday evenings. All ages welcome. Dues: \$75/year, first two visits free. Contact Mihai Hara-bor at (951) 461-7578. Website: [www.murrietachessclub.com](http://www.murrietachessclub.com).

NATIONAL CITY: The National City Chess Club meets anytime, daily at 1341 E. 8th St. Casual play, chess videos available, informal atmosphere. Dues: none, but small donation welcome. Call Jorge Balares at (619) 477-3118 or (619) 788-8395.

NEWBURY PARK: A new club, the Conejo Valley Chess Club, has started in Scrapbook Blessings at 300 Giant Oak Ave, Suite E. Instruction for all ages, scholastic and adult events planned.

Website: [conejovalleychessclub.com](http://conejovalleychessclub.com).

NEWHALL: The California Youth Chess League conducts a scholastic chess club 5:30 p.m. to 8:00 p.m. Mondays, except holidays, in Vincenzo's Pizza, 24504 1/2 Lyons Ave. Casual play, blitz, bughouse, free instruction for total beginners. Parents or guardians must stay with kids. Free. Call Jay Stallings at (661) 288-1705 or write to [coachjay@cycl.org](mailto:coachjay@cycl.org).

ORANGE: The Orange Senior Club meets from 1:00 p.m. to 4:00 p.m. Tuesdays in the Orange Senior Citizens Community Center, 170 S. Olive St. in Orange.

Casual play, all ages welcome.

Call (714) 538-9633.

PALM DESERT: A group meets 2:30 p.m. to 4:00 p.m. Sundays in the public library, 73-300 Fred Waring Drive.

Call the library at (760) 346-6552.

PANORAMA CITY: Master's Piece Chess Club meets at 2 p.m. Saturdays and Sundays in Suite #105, 9612 Van Nuys Blvd.

Casual play, rated tournaments. Free.

Call Norman Abadilla at (818) 571-6295.

PASADENA: The Pasadena Chess Club meets from 6:45 p.m. to 11:00 p.m. Fridays in the Boys and Girls Club, 3230 E. Del Mar Blvd.

Continuous tournaments at 7 p.m. Fridays. Dues: \$25/year, \$15 for juniors.

Call Neil Hultgren at (818) 243-3809. Website:

[www.tim-thompson.com/pasadena.html](http://www.tim-thompson.com/pasadena.html).

REDLANDS: The Joslyn Center Chess Club meets 11:30 a.m. to 5:00 p.m. Wednesdays in the Joslyn Senior Center, 21 Grant St.

Casual play, non-rated tournaments. No dues.

Call the Senior Center at (909) 798-7550.

RIDGECREST: The Ridgecrest Chess Club meets 5:00 p.m. to 8:00 p.m. Saturdays in the Kern County Library (west entrance), 131 E. Las Flores Ave.

Casual play, occasional scholastic and club tournaments. No dues.

Contact Dwight Morgan at (760) 377-0034 or at [dmorgan178@yahoo.com](mailto:dmorgan178@yahoo.com).

RIVERSIDE: A group meets for casual play and blitz at 6:00 p.m. Thursday evenings in Back to the Grind Café, 3575 University Ave. Free.

Bring equipment.

Call the café at (951) 784-0800.

Website: [www.back2thegrind.com](http://www.back2thegrind.com).

SAN DIEGO: The San Diego Chess Club opens for casual play at 2:00 p.m. weekdays, 10:00 a.m. Saturdays and noon Sundays in Balboa Park at 2225 6th Ave. (between Ivy and Juniper).

Tournaments Wednesday evenings and Saturdays, Jedi Knights children's club with Bruce Baker at 7:00 p.m. Fridays, lessons available.

Dues: \$60/year, discounts for seniors, juniors and active military.

Call the club at (619) 239-7166 or

contact Chuck Ensey at [chucnglo@aol.com](mailto:chucnglo@aol.com).

Website:

<http://http://sdchessclub.multiply.com>

**SAN LUIS OBISPO:** The San Luis Obispo Chess Club meets 6:30 p.m. to 9:30 p.m. Thursdays in Carl's Jr., 195 N. Santa Rosa St. Casual play, lectures, occasional tournaments. Dues: \$5/year. Contact Barbara McCaleb at (805) 544-0717 or [bmccaleb@calpoly.edu](mailto:bmccaleb@calpoly.edu).

**SANTA MONICA:** Chess tables are available from sunup to sundown daily at the Santa Monica International Chess Park, on the promenade just south of the Santa Monica pier. Casual chess, blitz, chess bulletin board, large demonstration board, occasional summer tournaments. No dues.

**SIMI VALLEY:** The YMCA Chess Club of Simi Valley meets 6:00 p.m. to 10:00 p.m. Mondays at the YMCA, 3200 Cochran St. Casual play, instruction, rated and non-rated tournaments. Dues: \$15 for 7 weeks, free to YMCA members. Contact John Williams at (805) 529-1816 or [leventhfish@hotmail.com](mailto:leventhfish@hotmail.com).

**VENTURA:** The Ventura County Chess Club meets on the first Tuesday, the second Monday, and the later Tuesdays each month in the Church of the Foothills, 6279 Foothill Rd. Rated tournaments, casual play. Dues: \$35.00/year, \$17.50/year for juniors and military. Call Jimmy Sweet at (805) 659-0356. Website: [www.vcchess.com](http://www.vcchess.com).

**VICTORVILLE:** The Victor Valley Chess Club meets noon to 4:00 p.m. Saturdays in the Victor Villa Clubhouse, 13393 Mariposa Rd. Casual play, non-rated quad tournaments most months, instruction. No dues. Write to [DonCotten@aol.com](mailto:DonCotten@aol.com).

**VICTORVILLE:** A group meets from 5 p.m. to 10 p.m. Wednesdays and Fridays at Starbuck's, 14848 Bear Valley Rd. Casual play. Free.

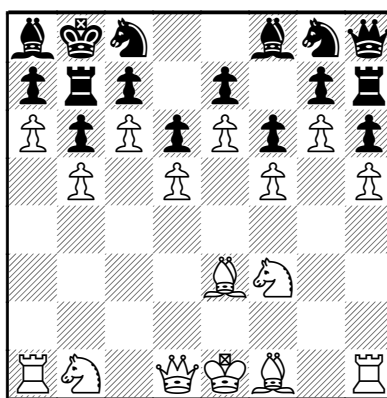
**WEST COVINA:** The West Covina Chess Club meets 1:00 p.m. to 5:00 p.m. Tuesdays and Thursdays in the Senior Center, 2501 E. Cortez St. All ages welcome. Casual play, rated and non-rated tournaments on Tuesdays. Bring chess equipment. No speed chess! Call Richard Williams at (626) 966-6311.

**WEST HILLS:** The West Valley Chess Club meets 6:30 p.m. to 10:30 p.m. Thursdays in the West Valley Jewish Community Center, 22622 Vanowen St. Open to all, continuous rated tournaments, blitz, casual play. One of the largest local clubs. Contact Jerry Yee at (818) 915-5572 or at [jyee6@socal.rr.com](mailto:jyee6@socal.rr.com).



**Here and There**, continued from page 32.

34.f4 Nc8 35.f5 Nd6 36.e4 Nc8 37.e5 Nd6 38.e6 Nc8 39.d4 Nd6 40.d5 Nc8 41.c4 Nd6 42.c5 Nc8 43.c6 Nd6 44.b4 Nc8 45.b5 Nd6 46.a4 Nc8 47.a5 Nd6 48.a6 Nc8 49.Be3 d6 50.Nf3



Stalemate.

*Editor's note: Our research turned up an astoundingly brief 12-move solution by chess problemist Sam Loyd (1841-1911). Readers are welcome to give it a try!*



## Lancaster

### AV Chess House

The AV Chess House hosts **monthly USCF-rated tournaments**. This **first-Saturday**-of-every-month event starts at 10am and finishes by 2pm. In those four hours, participants play three USCF-rated chess games, compete for prizes – 1st place \$30; 2nd Place \$15 – and have the opportunity to go over their games and analyze them with USCF National Master Matt Mahowald. The entry fee is \$20 and *email pre-registration is required* – no walk-ins accepted: [daa@mahowald.org](mailto:daa@mahowald.org)

The AV Chess House is holding two, low-cost, **Summer Chess Camps** the week of July 25-29.

The camps provide a wide variety of chess activities – every hour introduces new chess concepts, skills, and strategies that strengthen chess abilities as well as life skills such as planning, concentration, logical reasoning, critical thinking, problem solving, and complex decision making – all in a fun, hands-on atmosphere.

Each camp is open to all skill levels, from Beginners through Beyond Beginners and Intermediates.

The morning camp is designed for ages 5-12 and the afternoon camp is tailored to teenagers. The fee for 20 hours of hands-on chess learning and fun is only \$79 per student. For more information or to register: [daa@mahowald.org](mailto:daa@mahowald.org)

If you're between three and one-hundred-three, the **AV Chess House provides a chess class** that fits you. The 6-week, one-hour-a-week, classes are on Thursdays, June 9 through July 15 and cost only \$29 per person. (In the case of Parent & Tot Chess Time, that's \$29/pair.) For more information or to register: [daa@mahowald.org](mailto:daa@mahowald.org)

# UPCOMING EVENTS IN SOUTHERN CALIFORNIA



**July 2-4 or 3-4**

## **51st Annual Pacific Southwest Open A Heritage Event!**

**State Championship Qualifier**  
GPP: 30 California, Southern

6-SS, 40/2, Sd/1 (2-day schedule rds 1-3 G/1, then merges).

**LAX Hilton**, 5711 W. Century Blvd., Los Angeles, CA 90045. \$8,000 b/200, 50% of each prize guaranteed.

2 sections:

Open, \$1400-700-400-300-200, U2200 600-300-150, U2000 600-300-150.

Amateur, open to U1800/Unr, 600-300-150, U1600 500-250-150, U1400 400-250, U1200 150, Unr 150. Unr may win Unrated prize only.

All, EF \$69 if rec'd by 7/1, \$79 at site. SCCF memb. req'd (\$18, jrs. U18 \$10, includes Rank & File magazine), OSA.

Reg.: 3-day 9-10 am 7/2, 2-day 8:30-9:30 am 7/3.

Rds.: 3-day: 10:30-5 Sat-Sun, 10-4:30 Mon.

2-day: 10-12:14-2:30 Sun., then merges.

Ent: SCCF, PO Box 205, Monterey Park, CA 91754, online at [www.sccchess.com](http://www.sccchess.com).

HR: \$89 (310) 410-4000, mention chess. Parking: \$8/day.

Inf: (626) 282-7412 or [randallhough@yahoo.com](mailto:randallhough@yahoo.com).

NS, W, F.

Chess Magnet School JGP.

### **July 3 PSW Scholastics**

5-SS, G/30. **LAX Hilton**, 5711 W. Century Blvd., Los Angeles, CA 90045. Open to gr. 12/below.

In two sections: Open: Trophies to top 5, top 3 U1200, top 2 Unrated. Grade 6/below U1000: Trophies to top 5, top 3 U700, top 2 Unrated. Reg.: 8:30-9:15. Rds.: 9:30-11-12:15-1:45-3. EF: \$16 if received by 7/1, \$20 door.

Inf: (626) 282-7412 or

[randallhough@yahoo.com](mailto:randallhough@yahoo.com).

Ent: SCCF, PO Box 205, Monterey Park, CA 91754, online at [www.sccchess.com](http://www.sccchess.com).

### **July 4 PSW Hexes**

5-SS, G/90. **LAX Hilton**, 5711 W. Century Blvd., Los Angeles, CA 90045. Six-player sections by rating.

EF: \$20 if received by 7/1, \$25 door. \$\$ 40-20-10 each section.

Reg.: 9:30-10:15 am.

Rds.: 10:30-1:30-4:30.

Ent: SCCF, PO Box 205, Monterey Park, CA 91754, online at [www.sccchess.com](http://www.sccchess.com).

Chess Magnet School JGP.



**July 14-17, 15-17, or 16-17**

## **16th Annual Pacific Coast Open**

GPP: 150 Enhanced  
California Southern

6SS, 40/2, SD/1 (2-day option, rds 1-3 G/45). Under 900 Section, July 16-17 only, G/70.

**Renaissance Agoura Hills Hotel**,

30100 Agoura Road, Agoura Hills, CA 91301 (US-101 to Reyes Adobe Road exit). Adjacent to the Santa Monica Mountains, 26 miles west of Burbank, 12 miles from Malibu, 28 miles from Ventura. Free parking.

Prizes \$25,000 based on 230 paid entries (re-entries count half, \$90 off entries one-third), minimum \$20,000 (80% each prize) guaranteed.

In 7 sections.

**Open:** \$3000- 1500-700-400, clear or tiebreak win \$100 bonus, top U2300/Unr \$1600-800. FIDE.

**Under 2100:** \$2000-1000-500-300.

**Under 1900:** \$2000-1000- 500-300.

**Under 1700:** \$1800-900-500-300.

**Under 1500:** \$1500-700-400-200.

**Under 1200:** \$1200-600-300-200.

**Under 900:** \$300-200-120-80, trophies to top 7. Unrated may enter any section, with prize limit U2100 \$1000, U1900 \$800, U1700 \$600, U1500 \$400, U1200 \$200, U900 \$100; balance goes to next player(s) in line.

Top 6 sections EF: 4-day \$134, 3-day \$133, 2-day \$132 mailed by 7/6, all \$135 online at [chesstour.com](http://chesstour.com) by 7/10, \$140 phoned by 7/10 (406-896-2038, entry only, no questions), \$150 (no checks, credit cards OK) at tmt.

No mailed credit card entries.

GMs free; \$120 deducted from prize.

EF for all in U900 and unrated in U1200: all \$90 less.

SCCF membership (\$18, jrs \$10) required for rated Southern CA residents.

Re-entry \$70; not available in Open Section.

Unofficial [uschess.org](http://uschess.org) ratings usually used if otherwise unrated. Special 1 year USCF dues with magazine if paid with entry. Online at [chesstour.com](http://chesstour.com).

com, Adult \$30, Young Adult \$20, Scholastic \$15. Mailed, phoned or paid at site, Adult \$40, Young Adult \$30, Scholastic \$20.

4-day schedule: Reg Thu to 6:30 pm, rds Thu 7 pm, Fri 7 pm, Sat 11 & 6, Sun 10 & 4:30.

3-day schedule: Reg. Fri to 11 am, rds Fri 12 & 7, Sat 11 & 6, Sun 10 & 4:30.

2-day schedule: Reg Sat to 9 am, rds Sat 10, 12:45, 3:15 & 6, Sun 10 & 4:30.

Under 900 schedule: Reg Sat to 9 am, rds 10, 1:15, 4:30 each day.

All schedules: Half point byes OK all, limit 2, Open must commit before rd 2, other sections before rd 4.

HR: \$87-87, 818-707-1220, request chess rate, reserve by 6/30 or rate may increase.

Car rental: Avis, 800-331-1600, use AWD #D657633.

Ent: Continental Chess, PO Box 249, Salisbury Mills, NY 12577. \$15 service charge for refunds.

Questions: [www.chesstour.com](http://www.chesstour.com), 845-496-9658. Advance entries posted at [chesstour.com](http://chesstour.com).

Chess Magnet School JGP.



**August 6-7**

### San Diego County Championship

**State Championship Qualifier**  
20 Grand Prix Points (enhanced)

San Diego Chess Club, 2225 Sixth Ave., San Diego, CA 92101.

5 Rd SS, 3 Sections. \$3,500 prize fund, based on 70 players.

Prizes: Open Section: \$500-250, BU 2400 \$200-50 BU 2300 \$200-50, BU2200 \$200-50, BU2100 \$200-50.

Reserve Section (under 2000): \$300-150, BU 1900 \$200-50, BU1800 \$200-50, BU1700 \$200-50.

Booster Section (under 1600): \$180-75, BU1500 \$100-50, BU1400 \$75-

25. Plus \$15 Best Game Prize in each Section.

Rds: Sat 10 AM, 2 PM & 6 PM (G/90 with 5 sec delay), and Sun 10 AM & 3 PM (G/120 w/ 5 sec delay), 1 bye available in Rounds 1-4.

EF: \$50 IF rcvd by 8/05, otherwise \$60. Special Rate for U1400 or Unr is only \$25 in advance or \$30 at door.

Book prize only for Unr players.

SCCF membership Req'd, (\$18 Adult/\$10 Jr).

Reg.: 9 AM to 9:45.

Ent: SDCC, POB 120162, San Diego, CA 92112.

Info: call Bruce Baker (619) 239-7166, or see the SDCC website at

[www.sdchessclub.multiply.com](http://www.sdchessclub.multiply.com)

NS. NC. W.

Chess Magnet School JGP.



**August 27**

### San Luis Obispo County Championship

**State Championship Qualifier**

6 Grand Prix Points

California, Southern

4SS, G/60. 859 Marsh St., San Luis Obispo. 2 sections.

**Open:** EF: \$45 by 8/25. \$\$ (625 b/20, top 2 Gtd.) 200-125, Top A,B,C, \$100 each (min. 2 each class, else combined).

**Reserve:** U1400/Unr. EF: \$35 by 8/25. \$\$ (300b/14) 125-75, U1000 60, Unr. 40. Unr. must win Open prize or Reserve Unr. Both: one ½ pt bye req. with entry.

EF \$10 more at site, \$5 less to SCCF members. Reg. 9-9:30 a.m.

Rds. 10, 12:30, 3, 5:30 p.m. Info & online entry: [www.slochess.com](http://www.slochess.com).



**September 3-5**

### 33rd Annual Southern California Open

**State Championship Qualifier**  
120 Grand Prix Points (enhanced)

6-SS, 40/2, SD/1 (2-day schedule rds 1-3 G/60, then merges).

**Crowne Plaza Hotel**, 2270 Hotel Circle North, San Diego CA 92108.

\$\$\$20,000 Guaranteed prize fund. 5 Sections.

Prizes:

Open Section 1st \$2,600-1,800-1,200-900-600-500-400, BU2300 \$800-400, BU2200 \$1,000-600-400-200;

Premier Section (U2000): \$1,000-600-400-200;

Amateur Section (U1800) \$1,000-600-400-200;

Reserve Section (U1600) \$1,000-600-400-200;

Booster Section (U1400) \$600-400-200-100, BU1200 \$300-150, Best Unrated \$100.

Plus Best Game Prizes: \$75-50-25, one reserved for non-open sections.

Reg: 3-day: 8 to 9:30 AM, Sept. official rating list used. 2-day: 8 AM to 9 AM Sunday.

Rds:

3 day: 10 AM & 5 PM on Sat -Sun, 9 AM & 4 PM on Mon.

2- day: 9:30 AM, 11:45 & 2 PM Sun, then merges.

EF: \$100 if received by 8/14, \$120 at door. No credit cards at door, checks or cash only. Special rate of only \$75 if U1400 or unrated.

Free entry for GMs and IMs, no entry fee deducted from prizes, but you must check in at least one hour before the 1st round.

Open section will be FIDE rated. Unrated must play in Open (eligible for place prizes only) or U1400 (eligible for Unrated prize only).

SCCF membership required (\$18 Adult, \$10 Jr) for all So Cal residents.

Two half point byes okay in rounds 1-6, must be requested at least one hour before round, but a last round bye must be requested at registration and is irrevocable.

Ent: SDCC, PO Box 120162 San Diego CA 92112 or enter online at [www.scchess.com](http://www.scchess.com).

For more info call Bruce Baker of SDCC at (619) 239-7166 or see our website at [sdchessclub.multiply.com](http://sdchessclub.multiply.com). SCCF Annual Membership Meeting: Sunday 3 PM.

Hotel Rates: Special rate of only \$130 single or double, 619-297-1101, or 1-800-227-6963 if booked by 8/14/11, must reserve at least 2 nights, book ASAP, as rates will go up and rooms may sell out by mid-August.

Great tropical themed hotel is in the heart of Mission Valley, close to airport, great attractions such as Sea World, the SD Zoo, the lively Gaslamp District for night life, Seaport Village and Fashion Valley for shopping.

The Crown Plaza Hotel (see [www.cpsandiego.com](http://www.cpsandiego.com)) has a great restaurant and sushi bar, a heated pool, a fitness room, Whirlpool spa, free shuttle service and is next to the excellent Riverwalk golf course.

NS, NC, W.



**October 7-9 or 8-9**

**CCA 8th Annual  
Los Angeles Open**

**State Championship Qualifier**

GPP: 100 Enhanced  
California, Southern

5SS, 40/2, SD/1 (2-day option, rds 1-2 G/75).

**Sheraton Four Points LAX**, 9750 Airport Blvd., Los Angeles, CA 90045. Special parking \$5/day. \$20,000 based on 230 paid entries (re-entries & \$60 off entries count half), \$16,000 (80% each prize) minimum guaranteed.

In 6 sections.

**Open:** \$2000-1000-600-400, clear or tiebreak winner \$100 bonus, top Under 2400/Unr (not a section) \$600-300. FIDE.

**Under 2300:** \$1500-800-400-200,

top Under 2100 (not a section) \$500-250. FIDE.

**Under 2000:** \$1500-800-400-200, top Under 1800 (not a section) \$500-250.

**Under 1700:** \$1300-700-400-200, top Under 1500 (not a section) \$500-250.

**Under 1400:** \$1200-600-300-200, top Under 1200 (not a section) \$400-200.

**Under 1000:** \$700-400-200-150, trophies to top3, 1st Under 800, Under 600, unrated. Unrated may not win over \$200 in U1000, \$300 U1400, or \$500 U1700.

Top 5 sections EF: 3-day \$113, 2-day \$112 mailed by 9/29, all \$115 online at [chesstour.com](http://chesstour.com) by 10/4, \$120 phoned to 406-896-2038 by 10/4 (entry only, no questions), \$130 (no checks, credit cards OK) at site.

GMs free; \$100 deducted from prize. EF for all in U1000 or unrated in U1400: \$60 less.

Special 1 year USCF dues with magazine if paid with entry.

Online at [chesstour.com](http://chesstour.com), Adult \$30, Young Adult \$20, Scholastic \$15.

Mailed, phoned or paid at site, Adult \$40, Young Adult \$30, Scholastic \$20. Re-entry \$60; not available in Open Section.

3-day schedule: Reg ends Fri 6 pm, rds. Fri 7 pm, Sat 11 & 6, Sun 10 & 4:15.

2-day schedule: Reg ends Sat 10 am, rds. Sat 11, 2:30 & 6, Sun 10 & 4:15.

All: Half point byes OK all, limit 2, Open must commit before rd 2, others before rd 3.

HR: \$89-89, 1-800-529-4683, 310-649-7025; reserve by 9/24 or rate may increase. Car rental: Avis, 800-331-1600, AWDD657633, or reserve car online through [chesstour.com](http://chesstour.com).

Ent: Continental Chess, Box 249, Salisbury Mills, NY 12577. \$15 service charge for refunds.

Questions: [www.chesstour.com](http://www.chesstour.com), 845-

**Advertising Rates:** Full page \$80, half page \$45, 1/4 page \$25, 1/8 page \$15, back cover (3/4 page) \$80. (All rates are for camera-ready copy.) Flyer insert \$50 (advertiser must supply flyers). 50% discount for tournaments requiring SCCF membership. Payment should be sent to the Treasurer at P.O. Box 205, Monterey Park CA 91754. Display ads should be sent to the Editor, and flyers to the Publisher (addresses at right). SCCF reserves the right to reject any advertising.

496-9658. Advance entries posted at [chesstour.com](http://chesstour.com).

Chess Magnet School JGP.

## Solutions to Inside Moves

From page 2.

1. White won with 37.Bf8+ Ke6 38.Re1+ 1-0. Next would have come 38...Kd7 39.Rd1 Rc6 40.h4, after which White trades down into a winning King and pawn ending. Atoufi - Amanov, 4th Metro FIDE.

2. Decisive is 1...Ra1, threatening to walk out with the King to either c2 or e2, forcing the pawn promotion. No help is 2.a7 Rxa7 3.Rc6, for 3...Ra1 (again) 4.Kf2 is met with 4...Rc1 and the King gets out via c2.

3. White threatens two mates with 1.d7! Black cannot stop both.

4. White breaks in with 20.Bxb6! See Clawitter - Iyer on page 29.

5. White wins with 1.Nb5! threatening 2.Nc7 mate. Now if 1...cxb5, 2.Bxb5+ Bd7 3.Bxd7+ Kd8 4.Bc6+ wins the Rook, and if 1...Bh6 2.Nc7+ Kf8 3.Rd8+ Kg7 4.Rxh8 Kxh8 5.Nxa8, White is up the exchange. Be watchful; a GM fell into this!

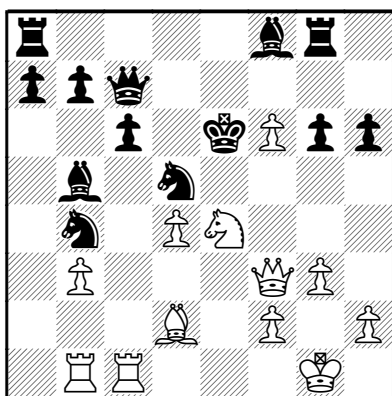
6. Black crashes through with 27...Bd4+! 28.Kh1 Qxc2!!, for if 29.Rxc2, then Rd1+ mates. Also, if 28.Kf1, then Qxc2!! works in the same way. See Rieb - McCreary, page 32.

7. White wins with 1.Be3! Rf3 2.Bg5!!. If 2...Rd3, then 3.g7 Rd8 4.Kxc7+-. Otherwise, Black can't stop the pawn from Queening: if 2...fxg5 then 3.g7; if 2...Rb3 or 2...Rf5, then 3.Bh4+ and 4.g7; and if 2...Rg3, then 3.Bh4 pins the Rook. Problem by Henri Rinck, 1906.

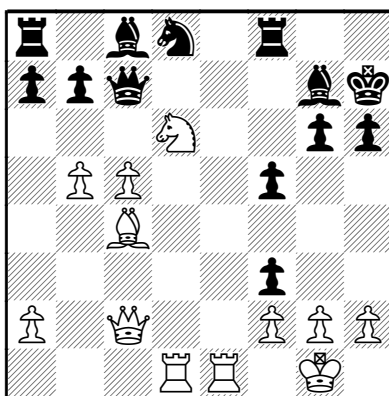
8. White Queens with 1.a7 Bg2 2.d7 Rd2 3.Bd5!!+-. Problem by Henri Rinck, 1906.

9. White Queens with 1.Nc2+ Ke5 2.Ne1 Bf5 3.Nf3+ Kf6 4.Nd2 Bh3 5.Ne4+ Ke5 6.a7+-. Rinck, 1910.

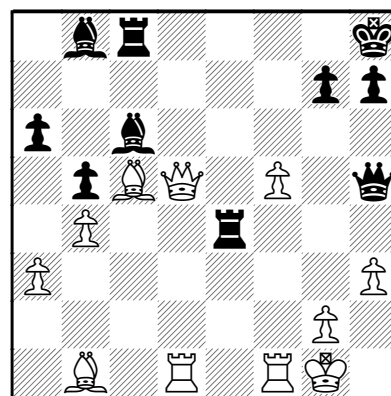
# OUTSIDE SHOTS!



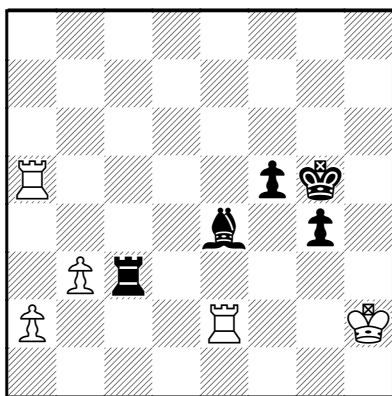
1. White to Play



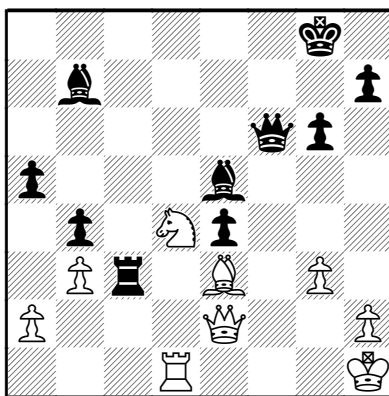
2. White to Play



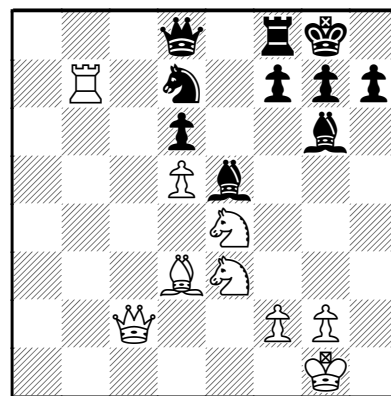
3. White to Play



4. Black to Play



5. Black to Play



6. Black to Play